

## Product datasheet for **AP17376PU-N**

### **FKBP10 (C-term) Rabbit Polyclonal Antibody**

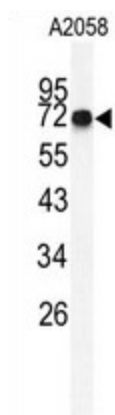
#### **Product data:**

<b>Product Type:</b>	Primary Antibodies
<b>Applications:</b>	WB
<b>Recommended Dilution:</b>	Western blot: 1:50 - 1:100. ELISA: 1:1,000.
<b>Reactivity:</b>	Human
<b>Host:</b>	Rabbit
<b>Clonality:</b>	Polyclonal
<b>Immunogen:</b>	KLH conjugated synthetic peptide selected from the C-terminal region of human FKBP10
<b>Specificity:</b>	This antibody detects FKBP10 at C-term.
<b>Formulation:</b>	PBS with 0.09% (W/V) sodium azide State: Liquid Ig fraction
<b>Concentration:</b>	lot specific
<b>Purification:</b>	Prepared by Saturated Ammonium Sulfate (SAS) precipitation followed by dialysis against PBS
<b>Conjugation:</b>	Unconjugated
<b>Storage:</b>	Store the antibody at 2 - 8 °C up to one month or (in aliquots) at -20 °C for longer. Avoid repeated freezing and thawing.
<b>Stability:</b>	Shelf life: one year from despatch.
<b>Gene Name:</b>	FK506 binding protein 10
<b>Database Link:</b>	<a href="#">Entrez Gene 60681 Human Q96AY3</a>
<b>Background:</b>	The protein belongs to the FKBP-type peptidyl-prolyl cis/trans isomerase family. It is located in endoplasmic reticulum and acts as molecular chaperones.
<b>Synonyms:</b>	FK506-binding protein 10, Immunophilin FKBP65, PPIase FKBP10, Rotamase
<b>Note:</b>	Molecular weight: 64245 Da
<b>Protein Families:</b>	Druggable Genome



[View online »](#)

## Product images:



Western blot analysis of FKBP10 antibody (C-term) in A2058 cell line lysates (35 ug/lane). FKBP10 (arrow) was detected using the purified Pab.