

## Product datasheet for **AP17375PU-N**

### Fibrinogen gamma chain (FGG) (C-term) Rabbit Polyclonal Antibody

#### Product data:

Product Type:	Primary Antibodies
Applications:	WB
Recommended Dilution:	Western blot: 1:50~100. ELISA: 1:1,000.
Reactivity:	Human
Host:	Rabbit
Clonality:	Polyclonal
Immunogen:	KLH conjugated synthetic peptide selected from the C-terminal region of human FIBG
Specificity:	This antibody detects FIBG at C-term.
Formulation:	PBS with 0.09% (W/V) sodium azide State: Liquid Ig fraction
Concentration:	lot specific
Purification:	Prepared by Saturated Ammonium Sulfate (SAS) precipitation followed by dialysis against PBS
Conjugation:	Unconjugated
Storage:	Store the antibody at 2 - 8 °C up to one month or (in aliquots) at -20 °C for longer. Avoid repeated freezing and thawing.
Stability:	Shelf life: one year from despatch.
Gene Name:	fibrinogen gamma chain
Database Link:	<a href="#">Entrez Gene 2266 Human P02679</a>
Background:	FIBG is the gamma component of fibrinogen, a blood-borne glycoprotein comprised of three pairs of nonidentical polypeptide chains. Following vascular injury, fibrinogen is cleaved by thrombin to form fibrin which is the most abundant component of blood clots. In addition, various cleavage products of fibrinogen and fibrin regulate cell adhesion and spreading, display vasoconstrictor and chemotactic activities, and are mitogens for several cell types. Mutations in its gene lead to several disorders, including dysfibrinogenemia, hypofibrinogenemia and thrombophilia.
Synonyms:	FGG, PRO2061, FIBG



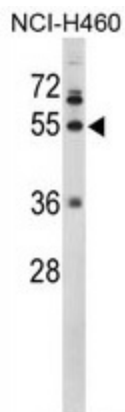
[View online »](#)

**Note:** Molecular weight: 51512 Da

**Protein Families:** Druggable Genome, Secreted Protein, Transmembrane

**Protein Pathways:** Complement and coagulation cascades

**Product images:**



Western blot analysis of FIBG Antibody (C-term) in NCI-H460 cell line lysates (35 ug/lane). FIBG (arrow) was detected using the purified Pab.