

## Product datasheet for **AP17369PU-N**

### **FHL1 (C-term) Rabbit Polyclonal Antibody**

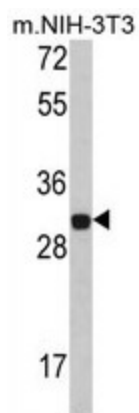
#### **Product data:**

<b>Product Type:</b>	Primary Antibodies
<b>Applications:</b>	WB
<b>Recommended Dilution:</b>	Western blot: 1:50 - 1:100. ELISA: 1:1,000.
<b>Reactivity:</b>	Human
<b>Host:</b>	Rabbit
<b>Clonality:</b>	Polyclonal
<b>Immunogen:</b>	KLH conjugated synthetic peptide selected from the C-terminal region of human FHL1
<b>Specificity:</b>	This antibody detects FHL1 at C-term.
<b>Formulation:</b>	PBS with 0.09% (W/V) sodium azide State: Liquid Ig fraction
<b>Concentration:</b>	lot specific
<b>Purification:</b>	Prepared by Saturated Ammonium Sulfate (SAS) precipitation followed by dialysis against PBS
<b>Conjugation:</b>	Unconjugated
<b>Storage:</b>	Store the antibody at 2 - 8 °C up to one month or (in aliquots) at -20 °C for longer. Avoid repeated freezing and thawing.
<b>Stability:</b>	Shelf life: one year from despatch.
<b>Gene Name:</b>	four and a half LIM domains 1
<b>Database Link:</b>	<a href="#">Entrez Gene 2273 Human Q13642</a>
<b>Background:</b>	FHL1 is a member of the four-and-a-half-LIM-only protein family. Family members contain two highly conserved, tandemly arranged, zinc finger domains with four highly conserved cysteines binding a zinc atom in each zinc finger. Expression of these family members occurs in a cell- and tissue-specific mode and these proteins are involved in many cellular processes.
<b>Synonyms:</b>	SLIM1, FHL1, FHL-1, SLIM-1, SLIM
<b>Note:</b>	Molecular weight: 36263 Da



[View online »](#)

## Product images:



Western blot analysis of FHL1 Antibody (C-term) in NIH-3T3 cell line lysates (35 ug/lane). FHL1 (arrow) was detected using the purified Pab.