

## Product datasheet for **AP17363PU-N**

### FBP2 (C-term) Rabbit Polyclonal Antibody

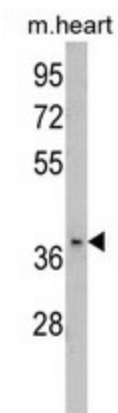
#### Product data:

Product Type:	Primary Antibodies
Applications:	WB
Recommended Dilution:	Western blot: 1:50 - 1:100.
Reactivity:	Human, Mouse
Host:	Rabbit
Clonality:	Polyclonal
Immunogen:	KLH conjugated synthetic peptide selected from the C-terminal region of human FBP2
Specificity:	This antibody detects FBP2 at C-term.
Formulation:	PBS with 0.09% (W/V) sodium azide State: Liquid Ig fraction
Concentration:	lot specific
Purification:	Prepared by Saturated Ammonium Sulfate (SAS) precipitation followed by dialysis against PBS
Conjugation:	Unconjugated
Storage:	Store the antibody at 2 - 8 °C up to one month or (in aliquots) at -20 °C for longer. Avoid repeated freezing and thawing.
Stability:	Shelf life: one year from despatch.
Gene Name:	fructose-bisphosphatase 2
Database Link:	<a href="#">Entrez Gene 14120 Mouse</a> <a href="#">Entrez Gene 8789 Human</a> <a href="#">O00757</a>
Background:	FBP2 is a gluconeogenesis regulatory enzyme which catalyzes the hydrolysis of fructose 1,6-bisphosphate to fructose 6-phosphate and inorganic phosphate.
Synonyms:	FBPase 2
Note:	Molecular weight: 36743 Da
Protein Families:	Druggable Genome
Protein Pathways:	Fructose and mannose metabolism, Glycolysis / Gluconeogenesis, Insulin signaling pathway, Metabolic pathways, Pentose phosphate pathway



[View online »](#)

## Product images:



Western blot analysis of FBP2 Antibody (C-term) in mouse heart tissue lysates (35 ug/lane). FBP2 (arrow) was detected using the purified Pab.