

Product datasheet for **AP17358PU-N**

Fascin (FSCN1) Rabbit Polyclonal Antibody

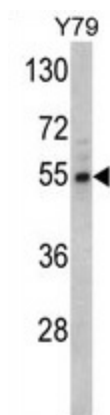
Product data:

Product Type:	Primary Antibodies
Applications:	WB
Recommended Dilution:	Western blot: 1:50 - 1:100. ELISA: 1:1,000.
Reactivity:	Human
Host:	Rabbit
Clonality:	Polyclonal
Immunogen:	KLH conjugated synthetic peptide selected from the Center region of human Fascin
Specificity:	This antibody detects Fascin at Center.
Formulation:	PBS with 0.09% (W/V) sodium azide State: Liquid Ig fraction
Concentration:	lot specific
Purification:	Prepared by Saturated Ammonium Sulfate (SAS) precipitation followed by dialysis against PBS
Conjugation:	Unconjugated
Storage:	Store the antibody at 2 - 8 °C up to one month or (in aliquots) at -20 °C for longer. Avoid repeated freezing and thawing.
Stability:	Shelf life: one year from despatch.
Gene Name:	fascin actin-bundling protein 1
Database Link:	Entrez Gene 6624 Human Q16658
Background:	Fascin organizes filamentous actin into bundles with a minimum of 4.1:1 actin/fascin ratio. It is probably involved in the assembly of actin filament bundles present in microspikes, membrane ruffles, and stress fibers.
Synonyms:	SCN1, FAN1, HSN, SNL, p55, Singed-like protein, Dendritic cell marker
Note:	Molecular weight: 54530 Da



[View online »](#)

Product images:



Western blot analysis of Fascin Antibody (Center) in Y79 cell line lysates (35 ug/lane). Fascin (arrow) was detected using the purified Pab.