

Product datasheet for **AP17357PU-N**

FAM3B (N-term) Rabbit Polyclonal Antibody

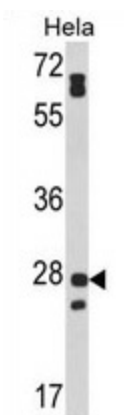
Product data:

Product Type:	Primary Antibodies
Applications:	WB
Recommended Dilution:	Western blot: 1:100 - 1:500. ELISA: 1:1,000.
Reactivity:	Human
Host:	Rabbit
Clonality:	Polyclonal
Immunogen:	KLH conjugated synthetic peptide selected from the N-terminal region of human FAM3B
Specificity:	This antibody detects FAM3B at N-term.
Formulation:	PBS with 0.09% (W/V) sodium azide State: Liquid Ig fraction
Concentration:	lot specific
Purification:	Purified through a protein A column, followed by peptide affinity purification
Conjugation:	Unconjugated
Storage:	Store the antibody at 2 - 8 °C up to one month or (in aliquots) at -20 °C for longer. Avoid repeated freezing and thawing.
Stability:	Shelf life: one year from despatch.
Gene Name:	family with sequence similarity 3 member B
Database Link:	Entrez Gene 54097 Human P58499
Background:	FAM3B has delayed effects on beta-cell function, inhibiting basal insulin secretion from a beta-cell line in a dose-dependent manner.
Synonyms:	C21orf11, PRED44, PANDER
Note:	Molecular weight: 25982 Da
Protein Families:	Druggable Genome, Secreted Protein, Transmembrane



[View online »](#)

Product images:



Western blot analysis of FAM3B Antibody (N-term) in HeLa cell line lysates (35 ug/lane). FAM3B (arrow) was detected using the purified Pab.