

## Product datasheet for **AP17352PU-N**

### Pea3 (ETV4) (C-term) Rabbit Polyclonal Antibody

#### Product data:

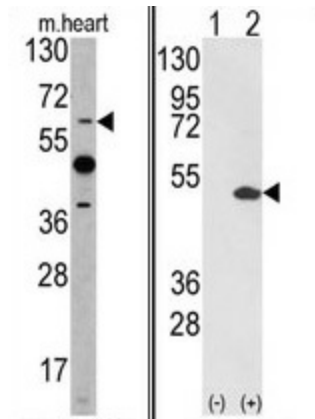
Product Type:	Primary Antibodies
Applications:	FC, IHC, WB
Recommended Dilution:	<b>ELISA:</b> 1/1000. <b>Western Blot:</b> 1/100-1/500. <b>Flow Cytometry:</b> 1/10-1/50. <b>Immunohistochemistry on Paraffin Sections:</b> 1/50-1/100.
Reactivity:	Human, Mouse
Host:	Rabbit
Clonality:	Polyclonal
Immunogen:	KLH conjugated synthetic peptide between 426~455 amino acids from the C-terminal region of Human ETV4.
Specificity:	This antibody detects ETV4 at C-term.
Formulation:	PBS State: Liquid purified Ig fraction Preservative: 0.09% Sodium Azide
Concentration:	lot specific
Purification:	Prepared by Saturated Ammonium Sulfate (SAS) precipitation followed by dialysis against PBS
Conjugation:	Unconjugated
Storage:	Store undiluted at 2-8°C for one month or (in aliquots) at -20°C for longer. Avoid repeated freezing and thawing.
Stability:	Shelf life: one year from despatch.
Predicted Protein Size:	53938 Da
Gene Name:	ETS variant 4
Database Link:	<a href="#">Entrez Gene 18612 Mouse</a> <a href="#">Entrez Gene 2118 Human</a> <a href="#">P43268</a>
Background:	ETV4 is a transcriptional activator that binds to the enhancer of the adenovirus E1A gene; the core-binding sequence is 5'[AC]GGA[AT]GT-3'.
Synonyms:	E1AF, E1A-F



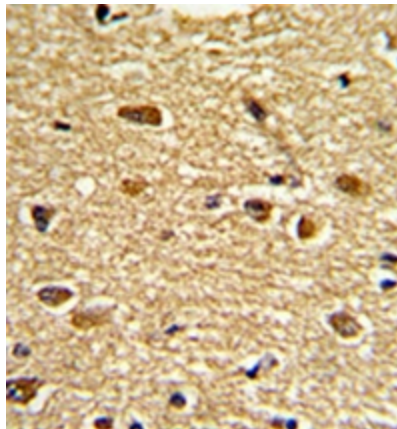
[View online »](#)

Protein Families: Druggable Genome, Transcription Factors

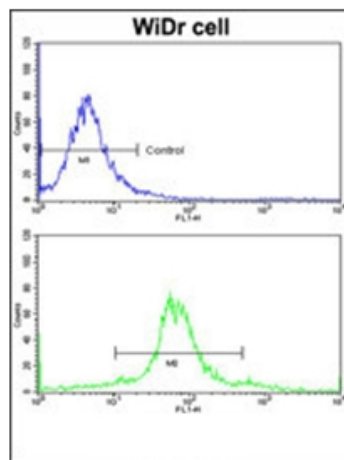
**Product images:**



(LEFT) Western blot analysis of ETV4 antibody (C-term) in mouse heart tissue lysates (35 ug/lane). ETV4 (arrow) was detected using the purified Pab. (RIGHT) Western blot analysis of ETV4 (arrow) using ETV4 Antibody (C-term). 293 cell lysates (2 ug/lane) either nontransfected (Lane 1) or transiently transfected with the ETV4 gene (Lane 2).



Formalin-fixed and paraffin-embedded human brain tissue reacted with ETV4 Antibody (C-term), which was peroxidase-conjugated to the secondary antibody, followed by DAB staining. This data demonstrates the use of this antibody for immunohistochemistry; clinical relevance has not been evaluated.



Flow cytometric analysis of wdr cells using ETV4 Antibody (C-term) (bottom histogram) compared to a negative control cell (top histogram). FITC-conjugated goat-anti-rabbit secondary antibodies were used for the analysis.