

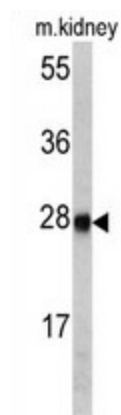
## Product datasheet for **AP17350PU-N**

### ETHE1 Rabbit Polyclonal Antibody

#### Product data:

Product Type:	Primary Antibodies
Applications:	WB
Recommended Dilution:	Western blot: 1:50 - 100. ELISA: 1:1,000.
Reactivity:	Human, Mouse
Host:	Rabbit
Clonality:	Polyclonal
Immunogen:	KLH conjugated synthetic peptide selected from the Center region of human ETHE1
Specificity:	This antibody detects ETHE1 at Center.
Formulation:	PBS with 0.09% (W/V) sodium azide State: Liquid Ig fraction
Concentration:	lot specific
Purification:	Prepared by Saturated Ammonium Sulfate (SAS) precipitation followed by dialysis against PBS
Conjugation:	Unconjugated
Storage:	Store the antibody at 2 - 8 °C up to one month or (in aliquots) at -20 °C for longer. Avoid repeated freezing and thawing.
Stability:	Shelf life: one year from despatch.
Gene Name:	ETHE1, persulfide dioxygenase
Database Link:	<a href="#">Entrez Gene 66071 Mouse</a> <a href="#">Entrez Gene 23474 Human</a> <a href="#">O95571</a>
Background:	ETHE1 is a sulfur dioxygenase that localizes within the mitochondrial matrix. The enzyme functions in sulfide catabolism. Mutations in its gene result in ethylmalonic encephalopathy.
Synonyms:	D83198; HSCO; YF13H12
Note:	Molecular weight: 27873 Da

[View online »](#)

**Product images:**


Western blot analysis of ETHE1 antibody (Center) in mouse kidney tissue lysates (35 ug/lane). ETHE1 (arrow) was detected using the purified Pab.