

## Product datasheet for **AP17343PU-N**

### ERP29 Rabbit Polyclonal Antibody

#### Product data:

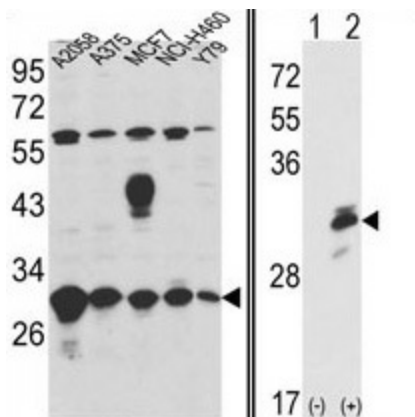
Product Type:	Primary Antibodies
Applications:	WB
Recommended Dilution:	Western blot: 1:50 - 1:100. ELISA: 1:1,000.
Reactivity:	Human
Host:	Rabbit
Clonality:	Polyclonal
Immunogen:	KLH conjugated synthetic peptide selected from the Center region of human ERP29
Specificity:	This antibody detects ERP29 at Center.
Formulation:	PBS with 0.09% (W/V) sodium azide State: Purified State: Liquid Ig fraction
Concentration:	lot specific
Purification:	Prepared by Saturated Ammonium Sulfate (SAS) precipitation followed by dialysis against PBS
Conjugation:	Unconjugated
Storage:	Store the antibody at 2 - 8 °C up to one month or (in aliquots) at -20 °C for longer. Avoid repeated freezing and thawing.
Stability:	Shelf life: one year from despatch.
Gene Name:	endoplasmic reticulum protein 29
Database Link:	<a href="#">Entrez Gene 10961 Human P30040</a>
Background:	ERP29 shows sequence similarity to the protein disulfide isomerase family. However, it lacks the thioredoxin motif characteristic of this family, suggesting that this protein does not function as a disulfide isomerase. The protein dimerizes and is thought to play a role in the processing of secretory proteins within the ER.
Synonyms:	ERp31, ERp28, C12orf8
Note:	Molecular weight: 28993 Da



[View online »](#)

Protein Families: Transmembrane

**Product images:**



(LEFT) Western blot analysis of ERP29 Antibody (Center) in A2058, A375, MCF7, NCI-H460, Y79 cell line lysates (35 ug/lane). ERP29 (arrow) was detected using the purified Pab. (RIGHT) Western blot analysis of ERP29 (arrow) using rabbit polyclonal ERP29 Antibody (Center). 293 cell lysates (2 ug/lane) either nontransfected (Lane 1) or transiently transfected with the ERP29 gene (Lane 2).