

## Product datasheet for **AP17341PU-N**

### EPS8 like protein 3 (EPS8L3) (N-term) Rabbit Polyclonal Antibody

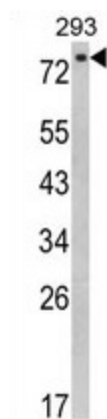
#### Product data:

Product Type:	Primary Antibodies
Applications:	WB
Recommended Dilution:	Western blot: 1:100 - 1:500. ELISA: 1:1,000.
Reactivity:	Human
Host:	Rabbit
Clonality:	Polyclonal
Immunogen:	KLH conjugated synthetic peptide selected from the N-terminal region of human EPS8L3
Specificity:	This antibody detects EPS8L3 at N-term.
Formulation:	PBS with 0.09% (W/V) sodium azide State: Liquid Ig fraction
Concentration:	lot specific
Purification:	Purified through a protein A column, followed by peptide affinity purification
Conjugation:	Unconjugated
Storage:	Store the antibody at 2 - 8 °C up to one month or (in aliquots) at -20 °C for longer. Avoid repeated freezing and thawing.
Stability:	Shelf life: one year from despatch.
Gene Name:	EPS8 like 3
Database Link:	<a href="#">Entrez Gene 79574 Human Q8TE67</a>
Background:	EPS8L3 is related to epidermal growth factor receptor pathway substrate 8 (EPS8), a substrate for the epidermal growth factor receptor. The function of this protein is unknown.
Synonyms:	EPS8-like protein 3, EPS8R3
Note:	Molecular weight: 66861 Da
Protein Families:	Druggable Genome



[View online »](#)

## Product images:



Western blot analysis of EPS8L3 Antibody (N-term) in 293 cell line lysates (35 ug/lane). EPS8L3 (arrow) was detected using the purified Pab.