

Product datasheet for **AP17340PU-N**

EPN3 (N-term) Rabbit Polyclonal Antibody

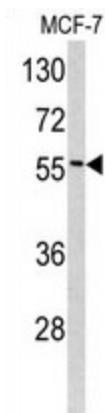
Product data:

Product Type:	Primary Antibodies
Applications:	WB
Recommended Dilution:	Western blot: 1:50 - 1:100. ELISA: 1:1,000.
Reactivity:	Human
Host:	Rabbit
Clonality:	Polyclonal
Immunogen:	KLH conjugated synthetic peptide selected from the N-terminal region of human EPN3
Specificity:	This antibody detects EPN3 at N-term.
Formulation:	PBS with 0.09% (W/V) sodium azide State: Liquid IgG fraction
Concentration:	lot specific
Purification:	Prepared by Saturated Ammonium Sulfate (SAS) precipitation followed by dialysis against PBS
Conjugation:	Unconjugated
Storage:	Store the antibody at 2 - 8 °C up to one month or (in aliquots) at -20 °C for longer. Avoid repeated freezing and thawing.
Stability:	Shelf life: one year from despatch.
Gene Name:	epsin 3
Database Link:	Entrez Gene 55040 Human Q9H201
Background:	EPN3 belongs to the epsin family.
Synonyms:	EPN3
Note:	Molecular weight: 68222 Da
Protein Pathways:	Endocytosis



[View online »](#)

Product images:



Western blot analysis of EPN3 antibody (N-term) in MCF-7 cell line lysates (35 ug/lane). EPN3 (arrow) was detected using the purified Pab.