

Product datasheet for **AP17339PU-N**

EHM2 (EPB41L4B) (C-term) Rabbit Polyclonal Antibody

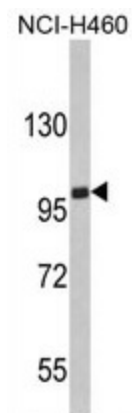
Product data:

Product Type:	Primary Antibodies
Applications:	WB
Recommended Dilution:	Western blot: 1:50 - 1:100. ELISA: 1:1,000.
Reactivity:	Human
Host:	Rabbit
Clonality:	Polyclonal
Immunogen:	KLH conjugated synthetic peptide selected from the C-terminal region of human EPB41L4B
Specificity:	This antibody detects EPB41L4B at C-term.
Formulation:	PBS with 0.09% (W/V) sodium azide State: Liquid Ig fraction
Concentration:	lot specific
Purification:	Prepared by Saturated Ammonium Sulfate (SAS) precipitation followed by dialysis against PBS
Conjugation:	Unconjugated
Storage:	Store the antibody at 2 - 8 °C up to one month or (in aliquots) at -20 °C for longer. Avoid repeated freezing and thawing.
Stability:	Shelf life: one year from despatch.
Gene Name:	erythrocyte membrane protein band 4.1 like 4B
Database Link:	Entrez Gene 54566 Human Q9H329
Synonyms:	Band 4.1-like protein 4B, CG1
Note:	Molecular weight: 99712 Da



[View online »](#)

Product images:



Western blot analysis of EPB41L4B Antibody (C-term) in NCI-H460 cell line lysates (35 ug/lane). EPB41L4B (arrow) was detected using the purified Pab.