

Product datasheet for **AP17338PU-N**

CLINT1 (Center) Rabbit Polyclonal Antibody

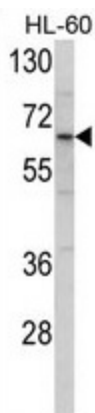
Product data:

Product Type:	Primary Antibodies
Applications:	WB
Recommended Dilution:	Western blot: 1:50 - 1:100. ELISA: 1:1,000.
Reactivity:	Human
Host:	Rabbit
Clonality:	Polyclonal
Immunogen:	KLH conjugated synthetic peptide selected from the Center region of human ENTH
Specificity:	This antibody detects ENTH at Center.
Formulation:	PBS with 0.09% (W/V) sodium azid State: Liquid Ig fraction
Concentration:	lot specific
Purification:	Prepared by Saturated Ammonium Sulfate (SAS) precipitation followed by dialysis against PBS
Conjugation:	Unconjugated
Storage:	Store the antibody at 2 - 8 °C up to one month or (in aliquots) at -20 °C for longer. Avoid repeated freezing and thawing.
Stability:	Shelf life: one year from despatch.
Gene Name:	clathrin interactor 1
Database Link:	Entrez Gene 9685 Human Q14677
Background:	ENTH binds to membranes enriched in phosphatidylinositol-4,5-biphosphate (PtdIns(4,5)P2). It May have a role in transport via clathrin-coated vesicles from the trans-Golgi network to endosomes. It stimulates clathrin assembly.
Synonyms:	CLINT1, ENTH, EPN4, EPNR, KIAA0171, Epsin-4, Epsin-related protein, Enthoprotin
Note:	Molecular weight: 68259 Da



[View online »](#)

Product images:



Western blot analysis of ENTH Antibody (Center) in HL-60 cell line lysates (35 ug/lane). ENTH (arrow) was detected using the purified Pab.