

Product datasheet for **AP17329PU-N**

Endo G (ENDOG) (C-term) Rabbit Polyclonal Antibody

Product data:

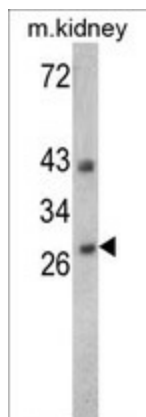
Product Type:	Primary Antibodies
Applications:	WB
Recommended Dilution:	Western blot: 1:50 - 1:100. ELISA: 1:1,000.
Reactivity:	Human, Mouse
Host:	Rabbit
Clonality:	Polyclonal
Immunogen:	KLH conjugated synthetic peptide selected from the C-terminal region of human ENDOG
Specificity:	This antibody detects ENDOG at C-term.
Formulation:	PBS with 0.09% (W/V) sodium azide State: Liquid Ig fraction
Concentration:	lot specific
Purification:	Prepared by Saturated Ammonium Sulfate (SAS) precipitation followed by dialysis against PBS
Conjugation:	Unconjugated
Storage:	Store the antibody at 2 - 8 °C up to one month or (in aliquots) at -20 °C for longer. Avoid repeated freezing and thawing.
Stability:	Shelf life: one year from despatch.
Gene Name:	endonuclease G
Database Link:	Entrez Gene 13804 Mouse Entrez Gene 2021 Human Q14249
Background:	ENDOG is a nuclear encoded endonuclease that is localized in the mitochondrion. The protein is widely distributed among animals and cleaves DNA at GC tracts. This protein is capable of generating the RNA primers required by DNA polymerase gamma to initiate replication of mitochondrial DNA.
Synonyms:	ENDOG
Note:	Molecular weight: 32646 Da
Protein Families:	Druggable Genome



[View online »](#)

Protein Pathways: Apoptosis

Product images:



Western blot analysis of ENDOG Antibody (C-term) in 293, K562, Jurkat, NCI-H460 cell line lysates and mouse kidney tissues lysates (35 ug/lane). ENDOG (arrow) was detected using the purified Pab.