

Product datasheet for **AP17327PU-N**

EMILIN1 (N-term) Rabbit Polyclonal Antibody

Product data:

Product Type:	Primary Antibodies
Applications:	FC, IHC, WB
Recommended Dilution:	ELISA: 1/1,000 (Peptide ELISA). Western blot: 1/1,000. Flow Cytometry: 1/10-1/50. Immunohistochemistry on Paraffin Sections: 1/50-1/100.
Reactivity:	Human
Host:	Rabbit
Isotype:	Ig
Clonality:	Polyclonal
Immunogen:	KLH conjugated synthetic peptide between 84-112 amino acids from the N-terminal region of Human EMILIN1.
Specificity:	This antibody detects Human EMILIN1 at N-term. Other species not tested.
Formulation:	PBS State: Purified State: Liquid purified Ig fraction Preservative: 0.09% (W/V) Sodium Azide
Concentration:	lot specific
Purification:	Saturated Ammonium Sulfate (SAS) precipitation followed by dialysis against PBS
Conjugation:	Unconjugated
Storage:	Store undiluted at 2-8°C for one month or (in aliquots) at -20°C for longer. Avoid repeated freezing and thawing.
Stability:	Shelf life: one year from despatch.
Predicted Protein Size:	106667 Da
Gene Name:	elastin microfibril interfacier 1
Database Link:	Entrez Gene 11117 Human Q9Y6C2

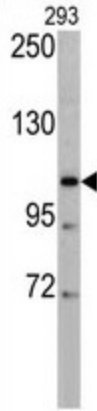


[View online »](#)

Background: EMILIN1 may be responsible for anchoring smooth muscle cells to elastic fibers, and may be involved not only in the formation of the elastic fiber, but also in the processes that regulate vessel assembly. It has cell adhesive capacity.

Synonyms: EMILIN-1, EMI

Product images:



Western blot analysis of EMILIN1 antibody (N-term) in 293 cell line lysates (35 ug/lane). EMILIN1 (arrow) was detected using the purified Pab.