

Product datasheet for **AP17321PU-N**

ELOVL6 (N-term) Rabbit Polyclonal Antibody

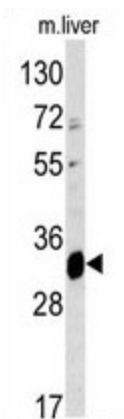
Product data:

Product Type:	Primary Antibodies
Applications:	WB
Recommended Dilution:	Western blot: 1:50 - 1:100. ELISA: 1:1,000.
Reactivity:	Human, Mouse
Host:	Rabbit
Clonality:	Polyclonal
Immunogen:	KLH conjugated synthetic peptide selected from the N-terminal region of human ELOVL6
Specificity:	This antibody detects ELOVL6 at N-term.
Formulation:	PBS with 0.09% (W/V) sodium azide State: Liquid Ig fraction
Concentration:	lot specific
Purification:	Prepared by Saturated Ammonium Sulfate (SAS) precipitation followed by dialysis against PBS
Conjugation:	Unconjugated
Storage:	Store the antibody at 2 - 8 °C up to one month or (in aliquots) at -20 °C for longer. Avoid repeated freezing and thawing.
Stability:	Shelf life: one year from despatch.
Gene Name:	ELOVL fatty acid elongase 6
Database Link:	Entrez Gene 170439 Mouse Entrez Gene 79071 Human Q9H5J4
Background:	Fatty acid elongases (EC 6.2.1.3), such as ELOVL6, use malonyl-CoA as a 2-carbon donor in the first and rate-limiting step of fatty acid elongation.
Synonyms:	hELO2, Fatty acyl-CoA elongase, Long-chain fatty-acyl elongase, FACE, LCE
Note:	Molecular weight: 31376 Da
Protein Families:	Transmembrane
Protein Pathways:	Biosynthesis of unsaturated fatty acids



[View online »](#)

Product images:



Western blot analysis of ELOVL6 antibody (N-term) in mouse liver tissue lysates (35 ug/lane). ELOVL6 (arrow) was detected using the purified Pab.