

Product datasheet for **AP17320PU-N**

ELF5 Rabbit Polyclonal Antibody

Product data:

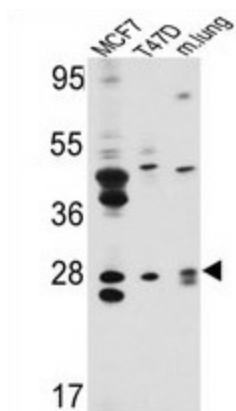
Product Type:	Primary Antibodies
Applications:	WB
Recommended Dilution:	Western blot: 1:50 - 1:100. ELISA: 1:1,000.
Reactivity:	Human, Mouse
Host:	Rabbit
Clonality:	Polyclonal
Immunogen:	KLH conjugated synthetic peptide selected from the Center region of human ELF5
Specificity:	This antibody detects ELF5 at Center.
Formulation:	PBS with 0.09% (W/V) sodium azide State: Liquid Ig fraction
Concentration:	lot specific
Purification:	Prepared by Saturated Ammonium Sulfate (SAS) precipitation followed by dialysis against PBS
Conjugation:	Unconjugated
Storage:	Store the antibody at 2 - 8 °C up to one month or (in aliquots) at -20 °C for longer. Avoid repeated freezing and thawing.
Stability:	Shelf life: one year from despatch.
Gene Name:	E74 like ETS transcription factor 5
Database Link:	Entrez Gene 13711 Mouse Entrez Gene 2001 Human Q9UKW6
Background:	ELF5 is a member of an epithelium-specific subclass of the Ets transcription factor family. In addition to its role in regulating the later stages of terminal differentiation of keratinocytes, it appears to regulate a number of epithelium-specific genes found in tissues containing glandular epithelium such as salivary gland and prostate. It has very low affinity to DNA due to its negative regulatory domain at the amino terminus.
Synonyms:	E74-like factor 5, Elf-5
Note:	Molecular weight: 31263 Da



[View online »](#)

Protein Families: Transcription Factors

Product images:



Western blot analysis of ELF5 Antibody (Center) in MCF7, T47D cell line lysates and mouse lung tissues lysates (35 ug/lane). ELF5 (arrow) was detected using the purified Pab.