

Product datasheet for **AP17311PU-N**

EGR1 (N-term) Rabbit Polyclonal Antibody

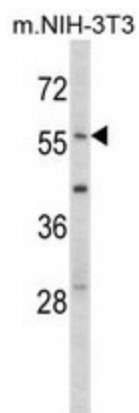
Product data:

Product Type:	Primary Antibodies
Applications:	WB
Recommended Dilution:	Western blot: 1:50 - 1:100. ELISA: 1:1,000.
Reactivity:	Human, Mouse
Host:	Rabbit
Clonality:	Polyclonal
Immunogen:	KLH conjugated synthetic peptide selected from the N-terminal region of human EGR1
Specificity:	This antibody detects EGR1 at N-term.
Formulation:	PBS with 0.23% (W/V) sodium azide State: Liquid Ig fraction
Concentration:	lot specific
Purification:	Prepared by Saturated Ammonium Sulfate (SAS) precipitation followed by dialysis against PBS
Conjugation:	Unconjugated
Storage:	Store the antibody at 2 - 8 °C up to one month or (in aliquots) at -20 °C for longer. Avoid repeated freezing and thawing.
Stability:	Shelf life: one year from despatch.
Gene Name:	early growth response 1
Database Link:	Entrez Gene 13653 Mouse Entrez Gene 1958 Human P18146
Background:	EGR1 belongs to the EGR family of C2H2-type zinc-finger proteins. It is a nuclear protein and functions as a transcriptional regulator. The products of target genes it activates are required for differentiation and mitogenesis.
Synonyms:	Early growth response protein 1, EGR-1, Zif268, Zif-268, NGFI-A, AT225, ETR103, KROX-24
Note:	Molecular weight: 57507 Da
Protein Families:	Druggable Genome
Protein Pathways:	Prion diseases



[View online »](#)

Product images:



Western blot analysis of EGR1 Antibody (N-term) in mouse NIH-3T3 tissue lysates (35 ug/lane). EGR1 (arrow) was detected using the purified Pab.