

## Product datasheet for **AP17307PU-N**

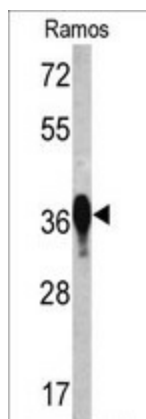
### EEF1D (N-term) Rabbit Polyclonal Antibody

#### Product data:

Product Type:	Primary Antibodies
Applications:	WB
Recommended Dilution:	Western blot: 1:50 - 1:100. ELISA: 1:1,000.
Reactivity:	Human
Host:	Rabbit
Clonality:	Polyclonal
Immunogen:	KLH conjugated synthetic peptide selected from the N-terminal region of human EEF1D
Specificity:	This antibody detects Elongation factor 1-D at N-term.
Formulation:	PBS with 0.09% (W/V) sodium azide State: Liquid Ig fraction
Concentration:	lot specific
Purification:	Prepared by Saturated Ammonium Sulfate (SAS) precipitation followed by dialysis against PBS
Conjugation:	Unconjugated
Storage:	Store the antibody at 2 - 8 °C up to one month or (in aliquots) at -20 °C for longer. Avoid repeated freezing and thawing.
Stability:	Shelf life: one year from despatch.
Gene Name:	eukaryotic translation elongation factor 1 delta
Database Link:	<a href="#">Entrez Gene 1936 Human P29692</a>
Background:	EEF1D is a subunit of the elongation factor-1 complex, which is responsible for the enzymatic delivery of aminoacyl tRNAs to the ribosome. This subunit functions as guanine nucleotide exchange factor. It is reported that this subunit interacts with HIV-1 Tat, and thus it represses the translation of host-cell, but not HIV-1, mRNAs.
Synonyms:	EF-1-delta, Elongation factor 1-delta, Antigen NY-CO-4, EEF1D, EF1D, Elongation factor 1-D
Note:	Molecular weight: 31122 Da



[View online »](#)

**Product images:**

Western blot analysis of EEF1D antibody (N-term) in Ramos cell line lysates (35 ug/lane). EEF1D (arrow) was detected using the purified Pab.