

Product datasheet for **AP17304PU-N**

EEF1A1 (C-term) Rabbit Polyclonal Antibody

Product data:

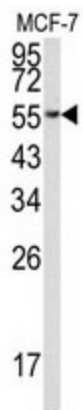
Product Type:	Primary Antibodies
Applications:	WB
Recommended Dilution:	Western blot: 1:50 - 1:100. ELISA: 1:1,000.
Reactivity:	Human
Host:	Rabbit
Clonality:	Polyclonal
Immunogen:	KLH conjugated synthetic peptide selected from the C-terminal region of human EEF1A1
Specificity:	This antibody detects Elongation factor 1 A-1 at C-term.
Formulation:	PBS with 0.09% (W/V) sodium azi State: Liquid Ig fraction
Concentration:	lot specific
Purification:	Prepared by Saturated Ammonium Sulfate (SAS) precipitation followed by dialysis against PBS
Conjugation:	Unconjugated
Storage:	Store the antibody at 2 - 8 °C up to one month or (in aliquots) at -20 °C for longer. Avoid repeated freezing and thawing.
Stability:	Shelf life: one year from despatch.
Gene Name:	eukaryotic translation elongation factor 1 alpha 1
Database Link:	Entrez Gene 1915 Human P68104
Background:	EEF1A1 is an isoform of the alpha subunit of the elongation factor-1 complex, which is responsible for the enzymatic delivery of aminoacyl tRNAs to the ribosome. This isoform (alpha 1) is expressed in brain, placenta, lung, liver, kidney, and pancreas, and the other isoform (alpha 2) is expressed in brain, heart and skeletal muscle. This isoform is identified as an autoantigen in 66% of patients with Felty syndrome.
Synonyms:	EF-1-alpha-1, eEF1A-1, EF-Tu, EEF1A, EF1A, CCS3, PT11, CCS-3, FLJ25721, GRAF-1EF, Elongation factor 1 alpha 1
Note:	Molecular weight: 50141 Da



[View online »](#)

Protein Families: Druggable Genome

Product images:



Western blot analysis of EEF1A1 Antibody (C-term) in MCF-7 cell line lysates (35 ug/lane). EEF1A1 (arrow) was detected using the purified Pab.