

Product datasheet for **AP17303PU-N**

Endothelin B Receptor (EDNRB) (C-term) Rabbit Polyclonal Antibody

Product data:

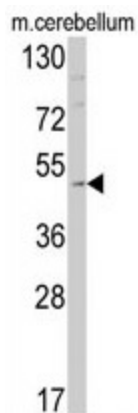
Product Type:	Primary Antibodies
Applications:	WB
Recommended Dilution:	Western blot: 1:50 - 1:100. ELISA: 1:1,000.
Reactivity:	Human, Mouse
Host:	Rabbit
Clonality:	Polyclonal
Immunogen:	KLH conjugated synthetic peptide selected from the C-terminal region of human EDNRB
Specificity:	This antibody detects Endothelin B receptor at C-term.
Formulation:	PBS with 0.29% (W/V) sodium azide State: Liquid IG fraction
Concentration:	lot specific
Purification:	Prepared by Saturated Ammonium Sulfate (SAS) precipitation followed by dialysis against PBS
Conjugation:	Unconjugated
Storage:	Store the antibody at 2 - 8 °C up to one month or (in aliquots) at -20 °C for longer. Avoid repeated freezing and thawing.
Stability:	Shelf life: one year from despatch.
Gene Name:	endothelin receptor type B
Database Link:	Entrez Gene 13618 Mouse Entrez Gene 1910 Human P24530
Background:	EDNRB is a G protein-coupled receptor which activates a phosphatidylinositol-calcium second messenger system. Its ligand, endothelin, consists of a family of three potent vasoactive peptides: ET1, ET2, and ET3. Studies suggest that the multigenic disorder, Hirschsprung disease type 2, is due to mutations in the endothelin receptor type B gene.
Synonyms:	ET-BR, ET-B, EDNRB, ETRB, ETB, ETBR, HSCR, WS4A, ABCDS, HSCR2
Note:	Molecular weight: 49644 Da
Protein Families:	Druggable Genome, GPCR, Transmembrane



[View online »](#)

Protein Pathways: Calcium signaling pathway, Melanogenesis, Neuroactive ligand-receptor interaction

Product images:



Western blot analysis of EDNRB Antibody (C-term) in mouse cerebellum tissue lysates (35 ug/lane). EDNRB (arrow) was detected using the purified Pab.