

## Product datasheet for **AP17300PU-N**

### ECE1 Rabbit Polyclonal Antibody

#### Product data:

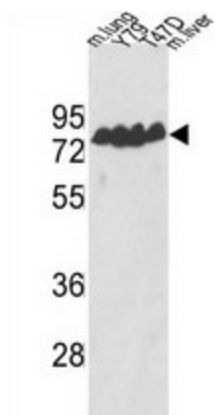
Product Type:	Primary Antibodies
Applications:	WB
Recommended Dilution:	<b>Western blot:</b> 1:1000.
Reactivity:	Bovine, Human, Mouse, Rat
Host:	Rabbit
Isotype:	Ig
Clonality:	Polyclonal
Immunogen:	KLH conjugated synthetic peptide between aa 392-419 from the Center region of human ECE-1.
Specificity:	This antibody detects ECE-1 at Center.
Formulation:	PBS with 0.09% (W/V) sodium azide State: Aff - Purified State: Liquid Ig fraction
Concentration:	lot specific
Purification:	Protein A column followed by peptide affinity purification.
Conjugation:	Unconjugated
Storage:	Store the antibody at 2 - 8 °C up to one month or (in aliquots) at -20 °C for longer. Avoid repeated freezing and thawing.
Stability:	Shelf life: one year from despatch.
Gene Name:	endothelin converting enzyme 1
Database Link:	<a href="#">Entrez Gene 94204 Rat</a> <a href="#">Entrez Gene 230857 Mouse</a> <a href="#">Entrez Gene 1889 Human P42892</a>
Background:	ECE-1 is involved in proteolytic processing of endothelin precursors to biologically active peptides.
Synonyms:	ECE1, ECE
Note:	Molecular weight: 87164 Da



[View online »](#)

Protein Families: Druggable Genome, Protease, Transmembrane

### Product images:



Western blot analysis of ECE-1 Antibody (Center) in Y79, T47D cell line and mouse lung, liver lysates (35 ug/lane). ECE-1 (arrow) was detected using the purified Pab.