

Product datasheet for **AP17292PU-N**

DPP8 (C-term) Rabbit Polyclonal Antibody

Product data:

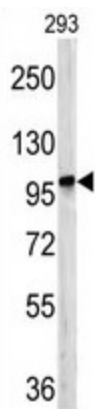
Product Type:	Primary Antibodies
Applications:	WB
Recommended Dilution:	Western blot: 1:50 - 1:100. ELISA: 1:1,000.
Reactivity:	Human
Host:	Rabbit
Clonality:	Polyclonal
Immunogen:	KLH conjugated synthetic peptide selected from the C-terminal region of human DPP8
Specificity:	This antibody detects DPP8 at C-term.
Formulation:	PBS with 0.09% (W/V) sodium azide State: Liquid Ig fraction
Concentration:	lot specific
Purification:	Prepared by Saturated Ammonium Sulfate (SAS) precipitation followed by dialysis against PBS
Conjugation:	Unconjugated
Storage:	Store the antibody at 2 - 8 °C up to one month or (in aliquots) at -20 °C for longer. Avoid repeated freezing and thawing.
Stability:	Shelf life: one year from despatch.
Gene Name:	dipeptidyl peptidase 8
Database Link:	Entrez Gene 54878 Human Q6V1X1
Background:	DPP8 is a member of the peptidase S9B family, a small family of dipeptidyl peptidases that are able to cleave peptide substrates at a prolyl bond. The protein shares similarity with dipeptidyl peptidase IV in that it is ubiquitously expressed, and hydrolyzes the same substrates. These similarities suggest that, like dipeptidyl peptidase IV, this protein may play a role in T-cell activation and immune function.
Synonyms:	MSTP097, MSTP135, MSTP141, Dipeptidyl peptidase 8, DPPVIII
Note:	Molecular weight: 103358 Da



[View online »](#)

Protein Families: Druggable Genome, Protease, Transmembrane

Product images:



Western blot analysis of DPP8 antibody (C-term) in 293 cell line lysates (35 ug/lane). DPP8 (arrow) was detected using the purified Pab.