

Product datasheet for **AP17291PU-N**

Protein downstream neighbor of Son (DONSON) (N-term) Rabbit Polyclonal Antibody

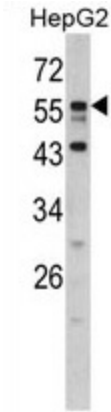
Product data:

Product Type:	Primary Antibodies
Applications:	WB
Recommended Dilution:	Western blot: 1:50 - 1:100. ELISA: 1:1,000.
Reactivity:	Human
Host:	Rabbit
Clonality:	Polyclonal
Immunogen:	KLH conjugated synthetic peptide selected from the N-terminal region of human DONSON
Specificity:	This antibody detects DONSON at N-term.
Formulation:	PBS with 0.09% (W/V) sodium azide State: Liquid Ig fraction
Concentration:	lot specific
Purification:	Prepared by Saturated Ammonium Sulfate (SAS) precipitation followed by dialysis against PBS
Conjugation:	Unconjugated
Storage:	Store the antibody at 2 - 8 °C up to one month or (in aliquots) at -20 °C for longer. Avoid repeated freezing and thawing.
Stability:	Shelf life: one year from despatch.
Gene Name:	downstream neighbor of SON
Database Link:	Entrez Gene 29980 Human Q9NYP3
Background:	DONSON is essential for DNA amplification in the ovary and required for cell proliferation during development.
Synonyms:	C21orf60
Note:	Molecular weight: 62747 Da



[View online »](#)

Product images:



Western blot analysis of DONSON antibody (N-term) in HepG2 cell line lysates (35 ug/lane). DONSON (arrow) was detected using the purified Pab.