

Product datasheet for **AP17290PU-N**

DOM3Z (DXO) (N-term) Rabbit Polyclonal Antibody

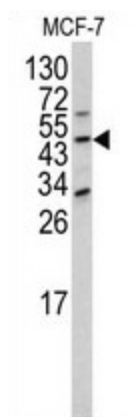
Product data:

Product Type:	Primary Antibodies
Applications:	WB
Recommended Dilution:	Western blot: 1:50 - 1:100. ELISA: 1:1,000.
Reactivity:	Human
Host:	Rabbit
Clonality:	Polyclonal
Immunogen:	KLH conjugated synthetic peptide selected from the N-terminal region of human DOM3Z
Specificity:	This antibody detects DOM3Z at N-term, Y88.
Formulation:	PBS with 0.09% (W/V) sodium azide State: Liquid Ig fraction
Concentration:	lot specific
Purification:	Prepared by Saturated Ammonium Sulfate (SAS) precipitation followed by dialysis against PBS
Conjugation:	Unconjugated
Storage:	Store the antibody at 2 - 8 °C up to one month or (in aliquots) at -20 °C for longer. Avoid repeated freezing and thawing.
Stability:	Shelf life: one year from despatch.
Gene Name:	decapping exoribonuclease
Database Link:	Entrez Gene 1797 Human O77932
Background:	The function of DOM3Z is unknown, but its ubiquitous expression and conservation in both simple and complex eukaryotes suggests that its gene may be a housekeeping gene.
Synonyms:	DOM3L, NG6, Dom-3 homolog Z
Note:	Molecular weight: 44929 Da



[View online »](#)

Product images:



Western blot analysis of DOM3Z antibody (N-term Y88) in MCF-7 cell line lysates (35 ug/lane). DOM3Z (arrow) was detected using the purified Pab.