

Product datasheet for **AP17285PU-N**

DLX2 (Center) Rabbit Polyclonal Antibody

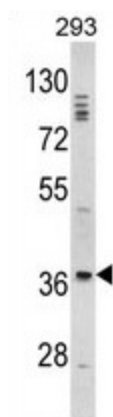
Product data:

Product Type:	Primary Antibodies
Applications:	WB
Recommended Dilution:	Western blot: 1:100 - 1:500. ELISA: 1:1,000.
Reactivity:	Human
Host:	Rabbit
Clonality:	Polyclonal
Immunogen:	KLH conjugated synthetic peptide selected from the Center region of human DLX2
Specificity:	This antibody detects DLX2 at Center.
Formulation:	PBS with 0.09% (W/V) sodium azide State: Liquid Ig fraction
Concentration:	lot specific
Purification:	Purified through a protein A column, followed by peptide affinity purification
Conjugation:	Unconjugated
Storage:	Store the antibody at 2 - 8 °C up to one month or (in aliquots) at -20 °C for longer. Avoid repeated freezing and thawing.
Stability:	Shelf life: one year from despatch.
Gene Name:	distal-less homeobox 2
Database Link:	Entrez Gene 1746 Human Q07687
Background:	DLX2 is likely to play a regulatory role in the development of the ventral forebrain. It may play a role in craniofacial patterning and morphogenesis. Subcellular location: Nucleus (Potential).
Synonyms:	DLX-2, Homeobox protein DLX2
Note:	Molecular weight: 34243 Da
Protein Families:	ES Cell Differentiation/IPS, Stem cell relevant signaling - TGFb/BMP signaling pathway, Transcription Factors



[View online »](#)

Product images:



Western blot analysis of DLX2 Antibody (Center) in 293 cell line lysates (35 ug/lane). DLX2 (arrow) was detected using the purified Pab.