

Product datasheet for **AP17283PU-N**

DLGAP1 (N-term) Rabbit Polyclonal Antibody

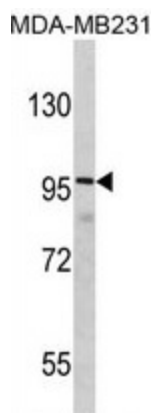
Product data:

Product Type:	Primary Antibodies
Applications:	WB
Recommended Dilution:	Western blot: 1:50 - 1:100. ELISA: 1:1,000.
Reactivity:	Human
Host:	Rabbit
Clonality:	Polyclonal
Immunogen:	KLH conjugated synthetic peptide selected from the N-terminal region of human DLGAP1
Specificity:	This antibody detects DLGAP1 at N-term.
Formulation:	PBS with 0.09% (W/V) sodium azide State: Liquid Ig fraction
Concentration:	lot specific
Purification:	Prepared by Saturated Ammonium Sulfate (SAS) precipitation followed by dialysis against PBS
Conjugation:	Unconjugated
Storage:	Store the antibody at 2 - 8 °C up to one month or (in aliquots) at -20 °C for longer. Avoid repeated freezing and thawing.
Stability:	Shelf life: one year from despatch.
Gene Name:	DLG associated protein 1
Database Link:	Entrez Gene 9229 Human O14490
Background:	DLGAP1 is part of the postsynaptic scaffold in neuronal cells.
Synonyms:	DAP1, DAP-1, GKAP
Note:	Moleculöar weight: 108873 Da



[View online »](#)

Product images:



Western blot analysis of DLGrified Pab.