

Product datasheet for **AP17272PU-N**

Decorin (DCN) Rabbit Polyclonal Antibody

Product data:

Product Type:	Primary Antibodies
Applications:	WB
Recommended Dilution:	Western blot: 1:50 - 1:100. ELISA: 1:1,000.
Reactivity:	Human, Mouse
Host:	Rabbit
Clonality:	Polyclonal
Immunogen:	KLH conjugated synthetic peptide selected from the Center region of human DCN
Specificity:	This antibody detects DCN at Center.
Formulation:	PBS with 0.09% (W/V) sodium azide State: Liquid Ig fraction
Concentration:	lot specific
Purification:	Prepared by Saturated Ammonium Sulfate (SAS) precipitation followed by dialysis against PBS
Conjugation:	Unconjugated
Storage:	Store the antibody at 2 - 8 °C up to one month or (in aliquots) at -20 °C for longer. Avoid repeated freezing and thawing.
Stability:	Shelf life: one year from despatch.
Gene Name:	decorin
Database Link:	Entrez Gene 13179 Mouse Entrez Gene 1634 Human P07585
Background:	DCN is a small cellular or pericellular matrix proteoglycan that is closely related in structure to biglycan protein. The protein and biglycan are thought to be the result of a gene duplication. This protein is a component of connective tissue, binds to type I collagen fibrils, and plays a role in matrix assembly. It contains one attached glycosaminoglycan chain. This protein is capable of suppressing the growth of various tumor cell lines.
Synonyms:	DCN, SLRR1B, Bone proteoglycan II, PG-S2, PG40
Note:	Molecular weight: 39747 Da

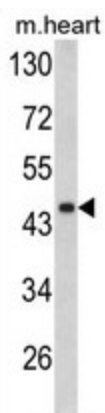


[View online »](#)

Protein Families: Druggable Genome, Secreted Protein

Protein Pathways: TGF-beta signaling pathway

Product images:



Western blot analysis of DCN antibody (Center) in mouse heart tissue lysates (35 ug/lane). DCN (arrow) was detected using the purified Pab.