

Product datasheet for **AP17271PU-N**

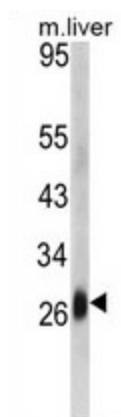
DCL 1 (CD302) (Center) Rabbit Polyclonal Antibody

Product data:

Product Type:	Primary Antibodies
Applications:	WB
Recommended Dilution:	Western blot: 1:100 - 1:500. ELISA: 1:1,000.
Reactivity:	Human, Mouse
Host:	Rabbit
Clonality:	Polyclonal
Immunogen:	KLH conjugated synthetic peptide selected from the Center region of human CD302
Specificity:	This antibody detects CD302 / DCL1 at Center.
Formulation:	PBS with 0.09% (W/V) sodium azide State: Liquid Ig fraction
Concentration:	lot specific
Purification:	Purified through a protein A column, followed by peptide affinity purification
Conjugation:	Unconjugated
Storage:	Store the antibody at 2 - 8 °C up to one month or (in aliquots) at -20 °C for longer. Avoid repeated freezing and thawing.
Stability:	Shelf life: one year from despatch.
Gene Name:	CD302 molecule
Database Link:	Entrez Gene 66205 Mouse Entrez Gene 9936 Human Q8IX05
Background:	CD302 is a C-type lectin receptor involved in cell adhesion and migration, as well as endocytosis and phagocytosis.
Synonyms:	C-type lectin BIMLEC, CLEC13A, DCL-1, KIAA0022
Note:	Molecular weight: 26183 Da
Protein Families:	Druggable Genome, Transmembrane



[View online »](#)

Product images:

Western blot analysis of DCL-1 Antibody (Center) in mouse liver tissue lysates (35 ug/lane). DCL-1 (arrow) was detected using the purified Pab.