

Product datasheet for **AP17266PU-N**

Cytokeratin 18 (KRT18) (C-term) Rabbit Polyclonal Antibody

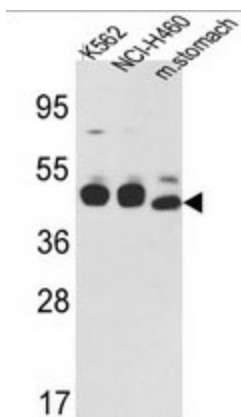
Product data:

Product Type:	Primary Antibodies
Applications:	WB
Recommended Dilution:	Western blot: 1:50 - 1:100. ELISA: 1:1,000.
Reactivity:	Human, Mouse
Host:	Rabbit
Clonality:	Polyclonal
Immunogen:	KLH conjugated synthetic peptide selected from the C-terminal region of human CYK18
Specificity:	This antibody detects Cytokeratin-18 (KRT18) at C-term.
Formulation:	PBS with 0.09% (W/V) sodium azide State: Liquid Ig fraction
Concentration:	lot specific
Purification:	Prepared by Saturated Ammonium Sulfate (SAS) precipitation followed by dialysis against PBS
Conjugation:	Unconjugated
Storage:	Store the antibody at 2 - 8 °C up to one month or (in aliquots) at -20 °C for longer. Avoid repeated freezing and thawing.
Stability:	Shelf life: one year from despatch.
Gene Name:	keratin 18
Database Link:	Entrez Gene 16668 Mouse Entrez Gene 3875 Human P05783
Background:	KRT18 is the type I intermediate filament chain keratin 18. Keratin 18, together with its filament partner keratin 8, are perhaps the most commonly found members of the intermediate filament family. They are expressed in single layer epithelial tissues of the body. Mutations in its gene have been linked to cryptogenic cirrhosis.
Synonyms:	Cytokeratin-18, CK18, Keratin-18, Keratin 18, KRT18, CYK18, K18
Note:	Molecular weight: 48058 Da
Protein Pathways:	Pathogenic Escherichia coli infection



[View online »](#)

Product images:



Western blot analysis of CYK18 Antibody (C-term) in K562, NCI-H460 cell line lysates and mouse stomach tissues lysates (35 ug/lane). CYK18 (arrow) was detected using the purified Pab.