

## Product datasheet for **AP17262PU-N**

### Cathepsin S (CTSS) Rabbit Polyclonal Antibody

#### Product data:

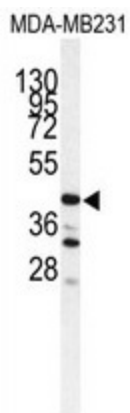
Product Type:	Primary Antibodies
Applications:	WB
Recommended Dilution:	Western blot: 1:50 - 1:100; ELISA: 1:1,000.
Reactivity:	Human
Host:	Rabbit
Clonality:	Polyclonal
Immunogen:	KLH conjugated synthetic peptide selected from the Center region of human CTSS
Specificity:	This antibody detects Cathepsin S at Center.
Formulation:	PBS with 0.09% (W/V) sodium azide State: Liquid Ig fraction
Concentration:	lot specific
Purification:	Prepared by Saturated Ammonium Sulfate (SAS) precipitation followed by dialysis against PBS
Conjugation:	Unconjugated
Storage:	Store the antibody at 2 - 8 °C up to one month or (in aliquots) at -20 °C for longer. Avoid repeated freezing and thawing.
Stability:	Shelf life: one year from despatch.
Gene Name:	cathepsin S
Database Link:	<a href="#">Entrez Gene 1520 Human P25774</a>
Background:	The protein CTSS, a member of the peptidase C1 family, is a lysosomal cysteine proteinase that may participate in the degradation of antigenic proteins to peptides for presentation on MHC class II molecules. The protein can function as an elastase over a broad pH range in alveolar macrophages.
Synonyms:	CTSS, Cathepsin-S
Note:	Molecular weight: 37496 Da
Protein Families:	Druggable Genome, Protease



[View online »](#)

Protein Pathways: Antigen processing and presentation, Lysosome

### Product images:



Western blot analysis of CTSS antibody (Center) in MDA-MB231 cell line lysates (35 ug/lane). CTSS (arrow) was detected using the purified Pab.