

Product datasheet for **AP17260PU-N**

Cathepsin K (CTSK) Rabbit Polyclonal Antibody

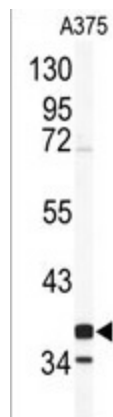
Product data:

Product Type:	Primary Antibodies
Applications:	FC, IHC, WB
Recommended Dilution:	Western blot: 1:1000. Immunohistochemistry on formalin-fixed, paraffin-embedded sections: 1:10 - 1:50. Flow Cytometry: 1:10 - 1:50.
Reactivity:	Bovine, Human, Monkey, Porcine, Rabbit
Host:	Rabbit
Clonality:	Polyclonal
Immunogen:	KLH conjugated synthetic peptide between aa 207-27 from the Center region of human CTSK.
Specificity:	This antibody detects Cathepsin K at Center.
Formulation:	PBS with 0.09% (W/V) sodium azide State: Aff - Purified State: Liquid Ig fraction
Concentration:	lot specific
Purification:	Purified through Protein A column followed by peptide affinity purification.
Conjugation:	Unconjugated
Storage:	Store undiluted at 2-8°C for one month or (in aliquots) at -20°C for longer. Avoid repeated freezing and thawing.
Stability:	Shelf life: one year from despatch.
Gene Name:	cathepsin K
Database Link:	Entrez Gene 1513 Human P43235



[View online »](#)

Background:	The protein encoded by this gene is a lysosomal cysteine proteinase involved in bone remodeling and resorption. This protein, which is a member of the peptidase C1 protein family, is predominantly expressed in osteoclasts. However, the encoded protein is also expressed in a significant fraction of human breast cancers, where it could contribute to tumor invasiveness. Mutations in this gene are the cause of pycnodysostosis, an autosomal recessive disease characterized by osteosclerosis and short stature. This gene may be subject to RNA editing.
Synonyms:	Cathepsin O, Cathepsin X, Cathepsin O2, CTSK, CTSO, CTSO2
Note:	Molecular weight: 36966 Da
Protein Families:	Druggable Genome, Protease
Protein Pathways:	Lysosome

Product images:

Western blot analysis of CTSK antibody (Center R222) in A375 cell line lysates (35 ug/lane). CTSK (arrow) was detected using the purified Pab.