

Product datasheet for **AP17259PU-N**

Cathepsin H (CTSH) (N-term) Rabbit Polyclonal Antibody

Product data:

Product Type:	Primary Antibodies
Applications:	FC, IHC, WB
Recommended Dilution:	ELISA: 1/1000. Western Blot: 1/100-1/500. Flow Cytometry: 1/10-1/50. Immunohistochemistry on Paraffin Sections: 1/50-1/100.
Reactivity:	Human
Host:	Rabbit
Clonality:	Polyclonal
Immunogen:	KLH conjugated synthetic peptide between 32~62 amino acids from the N-terminal region of human CTSH
Specificity:	This antibody detects Human Cathepsin H at N-term.
Formulation:	PBS containing 0.09% (W/V) Sodium Azide as preservative State: Liquid purified Ig fraction
Concentration:	lot specific
Purification:	Prepared by Saturated Ammonium Sulfate (SAS) precipitation followed by dialysis against PBS
Conjugation:	Unconjugated
Storage:	Store undiluted at 2-8°C for one month or (in aliquots) at -20°C for longer. Avoid repeated freezing and thawing.
Stability:	Shelf life: one year from despatch.
Predicted Protein Size:	37378 Da
Gene Name:	cathepsin H
Database Link:	Entrez Gene 1512 Human P09668



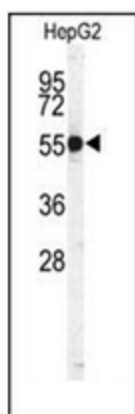
[View online »](#)

Background:

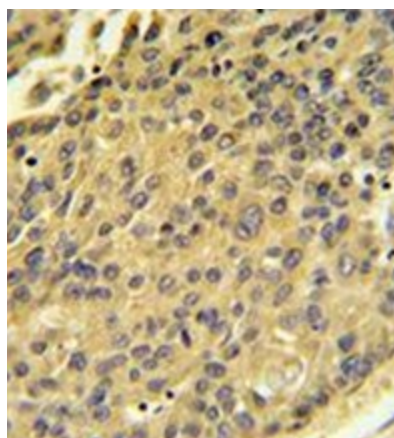
The protein is a lysosomal cysteine proteinase important in the overall degradation of lysosomal proteins. It is composed of a dimer of disulfide-linked heavy and light chains, both produced from a single protein precursor. The protein, which belongs to the peptidase C1 protein family, can act both as an aminopeptidase and as an endopeptidase. Increased expression of its gene has been correlated with malignant progression of prostate tumors.

Synonyms:

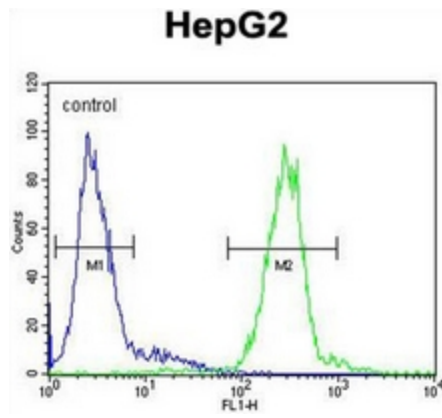
CTSH, CPSB, Cathepsin B3

Product images:

Western blot analysis of CTSH Antibody (N-term) in HepG2 cell line lysates (35ug/lane). CTSH (arrow) was detected using the purified Pab.



Immunohistochemistry analysis in formalin fixed and paraffin embedded human hepatocarcinoma recated with CTSH Antibody (N-term), which was peroxidase conjugated to the secondary antibody and followed by DAB staining. This data demonstrates the use of the CTSH Antibody (N-term) for immunohistochemistry. Clinical relevance has not been evaluated.



Flow cytometric analysis of HepG2 cells using CTSH Antibody (N-term) (right histogram) compared to a negative control cell (left histogram). FITC-conjugated goat-anti-rabbit secondary antibodies were used for the analysis.