

Product datasheet for **AP17257PU-N**

Cathepsin F (CTSF) (Center) Rabbit Polyclonal Antibody

Product data:

Product Type:	Primary Antibodies
Applications:	WB
Recommended Dilution:	Western blot: 1:50 - 1:100. ELISA: 1:1,000.
Reactivity:	Human
Host:	Rabbit
Clonality:	Polyclonal
Immunogen:	KLH conjugated synthetic peptide selected from the Center region of human CTSF
Specificity:	This antibody detects Cathepsin F at Center, D276.
Formulation:	PBS with 0.09% (W/V) sodium azide State: Liquid Ig fraction
Concentration:	lot specific
Purification:	Prepared by Saturated Ammonium Sulfate (SAS) precipitation followed by dialysis against PBS
Conjugation:	Unconjugated
Storage:	Store the antibody at 2 - 8 °C up to one month or (in aliquots) at -20 °C for longer. Avoid repeated freezing and thawing.
Stability:	Shelf life: one year from despatch.
Gene Name:	cathepsin F
Database Link:	Entrez Gene 8722 Human Q9UBX1



[View online »](#)

Background:

Cathepsins are papain family cysteine proteinases that represent a major component of the lysosomal proteolytic system. Cathepsins generally contain a signal sequence, followed by a propeptide and then a catalytically active mature region. The very long (251 amino acid residues) proregion of the cathepsin F precursor contains a C-terminal domain similar to the pro-segment of cathepsin L-like enzymes, a 50-residue flexible linker peptide, and an N-terminal domain predicted to adopt a cystatin-like fold. The cathepsin F proregion is unique within the papain family cysteine proteases in that it contains this additional N-terminal segment predicted to share structural similarities with cysteine protease inhibitors of the cystatin superfamily. This cystatin-like domain contains some of the elements known to be important for inhibitory activity. CTSF is a predicted protein of 484 amino acids which contains a 19 residue signal peptide. Cathepsin F contains five potential N-glycosylation sites, and it may be targeted to the endosomal/lysosomal compartment via the mannose 6-phosphate receptor pathway.

Synonyms:

CATSF, CTSF

Note:

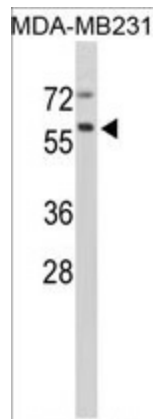
Molecular weight: 53366 Da

Protein Families:

Druggable Genome, Protease

Protein Pathways:

Lysosome

Product images:

Western blot analysis of CTSF Antibody (Center D276) in MDA-MB231 cell line lysates (35 ug/lane). CTSF (arrow) was detected using the purified Pab.