

## Product datasheet for **AP17256PU-N**

### Cathepsin E (CTSE) (Center) Rabbit Polyclonal Antibody

#### Product data:

|                       |   |
|-----------------------|---|
| Product Type:         | Primary Antibodies  |
| Applications:         | WB  |
| Recommended Dilution: | Western blot: 1:50 - 1:100.<br>ELISA: 1:1,000.  |
| Reactivity:           | Human, Mouse  |
| Host:                 | Rabbit  |
| Clonality:            | Polyclonal  |
| Immunogen:            | KLH conjugated synthetic peptide selected from the Center region of human CTSE  |
| Specificity:          | This antibody detects Cathepsin E at Center.  |
| Formulation:          | PBS with 0.09% (W/V) sodium azide<br>State: Liquid Ig fraction  |
| Concentration:        | lot specific  |
| Purification:         | Prepared by Saturated Ammonium Sulfate (SAS) precipitation followed by dialysis against PBS   |
| Conjugation:          | Unconjugated  |
| Storage:              | Store the antibody at 2 - 8 °C up to one month or (in aliquots) at -20 °C for longer. Avoid repeated freezing and thawing.  |
| Stability:            | Shelf life: one year from despatch.   |
| Gene Name:            | cathepsin E   |
| Database Link:        | <a href="#">Entrez Gene 13034 Mouse</a> <a href="#">Entrez Gene 1510 Human</a><br><a href="#">P14091</a>  |
| Background:           | CTSE is a gastric aspartyl protease that functions as a disulfide-linked homodimer. This protease, which is a member of the peptidase C1 family, has a specificity similar to that of pepsin A and cathepsin D. It is an intracellular proteinase that does not appear to be involved in the digestion of dietary protein and is found in highest concentration in the surface of epithelial mucus-producing cells of the stomach. It is the first aspartic proteinase expressed in the fetal stomach and is found in more than half of gastric cancers. It appears, therefore, to be an oncofetal antigen. |
| Synonyms:             | CTSE  |



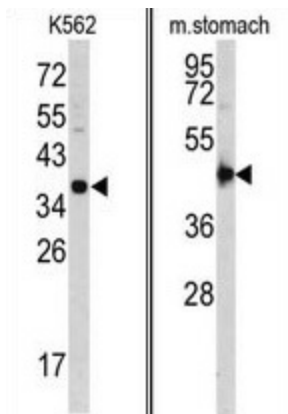
[View online »](#)

Note: Molecular weight: 43312 Da

Protein Families: Druggable Genome, Protease

Protein Pathways: Lysosome

### Product images:



(LEFT) Western blot analysis of CTSE antibody (Center) in K562 cell line lysates (35 ug/lane).CTSE (arrow) was detected using the purified Pab.  
(RIGHT) Western blot analysis of CTSE antibody (Center) in mouse stomach tissue lysates (35 ug/lane). CTSE (arrow) was detected using the purified Pab.