

Product datasheet for **AP17253PU-N**

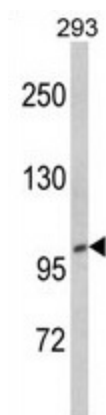
FCP1 (CTDP1) (N-term) Rabbit Polyclonal Antibody

Product data:

Product Type:	Primary Antibodies
Applications:	WB
Recommended Dilution:	Western blot: 1:50 - 1:100. ELISA: 1:1,000.
Reactivity:	Human
Host:	Rabbit
Clonality:	Polyclonal
Immunogen:	KLH conjugated synthetic peptide selected from the N-terminal region of human CTDP1
Specificity:	This antibody detects CTDP1 at N-term.
Formulation:	PBS with 0.09% (W/V) sodium azide State: Liquid Ig fraction
Concentration:	lot specific
Purification:	Purified through a protein A column, followed by peptide affinity purification
Conjugation:	Unconjugated
Storage:	Store the antibody at 2 - 8 °C up to one month or (in aliquots) at -20 °C for longer. Avoid repeated freezing and thawing.
Stability:	Shelf life: one year from despatch.
Gene Name:	CTD phosphatase subunit 1
Database Link:	Entrez Gene 9150 Human Q9Y5B0
Background:	CTDP1 is a protein which interacts with the carboxy-terminus of transcription initiation factor TFIIF, a transcription factor which regulates elongation as well as initiation by RNA polymerase II. The protein may also represent a component of an RNA polymerase II holoenzyme complex.
Synonyms:	FCP1
Note:	Molecular weight: 104297 Da
Protein Families:	Druggable Genome, Phosphatase, Transcription Factors



[View online »](#)

Product images:

Western blot analysis of CTD1P1 Antibody (N-term) in 293 cell line lysates (35 ug/lane). CTD1P1 (arrow) was detected using the purified Pab.