

## Product datasheet for **AP17245PU-N**

### Corticotropin Releasing Factor Receptor 2 (CRHR2) (N-term) Rabbit Polyclonal Antibody

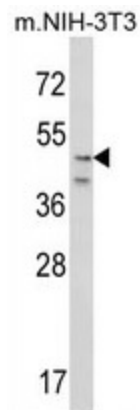
#### Product data:

Product Type:	Primary Antibodies
Applications:	WB
Recommended Dilution:	Western blot: 1:50 - 1:100. ELISA: 1:1,000.
Reactivity:	Human, Mouse
Host:	Rabbit
Clonality:	Polyclonal
Immunogen:	KLH conjugated synthetic peptide selected from the N-terminal region of human CRHR2
Specificity:	This antibody detects CRHR2 at N-term.
Formulation:	PBS with 0.27% (W/V) sodium azide State: Liquid Ig fraction
Concentration:	lot specific
Purification:	Prepared by Saturated Ammonium Sulfate (SAS) precipitation followed by dialysis against PBS
Conjugation:	Unconjugated
Storage:	Store the antibody at 2 - 8 °C up to one month or (in aliquots) at -20 °C for longer. Avoid repeated freezing and thawing.
Stability:	Shelf life: one year from despatch.
Gene Name:	corticotropin releasing hormone receptor 2
Database Link:	<a href="#">Entrez Gene 12922 Mouse</a> <a href="#">Entrez Gene 1395 Human</a> <a href="#">Q13324</a>
Background:	CRHR2 is a receptor for corticotropin releasing factor. It shows high-affinity CRF binding. Also binds to urocortin I, II and III. The activity of this receptor is mediated by G proteins which activate adenylyl cyclase.
Synonyms:	Corticotropin-releasing factor receptor 2, CRF-R 2, CRF2, CRF2R, CRH2R
Note:	Molecular weight: 47688 Da
Protein Families:	Druggable Genome, Transmembrane
Protein Pathways:	Neuroactive ligand-receptor interaction



[View online »](#)

## Product images:



Western blot analysis of CRHR2 Antibody (N-term) in NIH-3T3 cell line lysates (35 ug/lane). CRHR2 (arrow) was detected using the purified Pab.