

## Product datasheet for **AP17243PU-N**

### **CREB3L1 (C-term) Rabbit Polyclonal Antibody**

#### **Product data:**

<b>Product Type:</b>	Primary Antibodies
<b>Applications:</b>	FC, IHC, WB
<b>Recommended Dilution:</b>	ELISA: 1/1,000. Western blot: 1/50-1/100. Flow cytometry: 1/10-1/50. Immunohistochemistry: 1/50-1/100.
<b>Reactivity:</b>	Human, Mouse
<b>Host:</b>	Rabbit
<b>Clonality:</b>	Polyclonal
<b>Immunogen:</b>	KLH conjugated synthetic peptide between 488-517 amino acids from the C-terminal region of Human CREB3L1
<b>Specificity:</b>	This antibody detects CREB3L1 / OASIS at C-term.
<b>Formulation:</b>	PBS with 0.09% (W/V) Sodium Azide as preservative State: Purified State: Liquid purified Ig fraction
<b>Concentration:</b>	lot specific
<b>Purification:</b>	Prepared by Saturated Ammonium Sulfate (SAS) precipitation followed by dialysis against PBS.
<b>Conjugation:</b>	Unconjugated
<b>Storage:</b>	Store the antibody undiluted at 2-8°C for one month or (in aliquots) at -20°C for longer. Avoid repeated freezing and thawing.
<b>Stability:</b>	Shelf life: one year from despatch.
<b>Gene Name:</b>	cAMP responsive element binding protein 3-like 1
<b>Database Link:</b>	<a href="#">Entrez Gene 26427 Mouse</a> <a href="#">Entrez Gene 90993 Human</a> <a href="#">Q96BA8</a>



[View online »](#)

**Background:** CREB3L1 is a transcription factor that acts during endoplasmic reticulum stress by activating unfolded protein response target genes. It is specifically involved in ER-stress response in astrocytes in the central nervous system (By similarity). It may play a role in gliosis. In vitro, it binds to box-B element, cAMP response element (CRE) and CRE-like sequences, and activates transcription through box-B element but not through CRE.

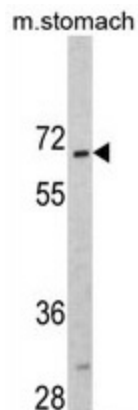
**Synonyms:** PSEC0238

**Note:** Calculated Molecular weight: 57005 Da

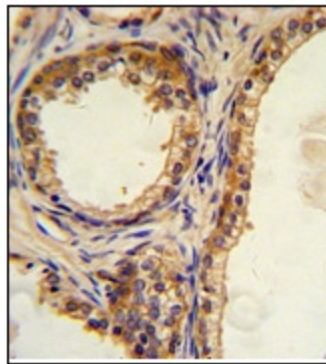
**Protein Families:** Transcription Factors

**Protein Pathways:** Huntington's disease, Melanogenesis, Prostate cancer

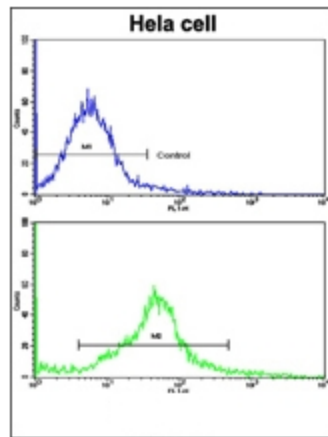
### Product images:



Western blot analysis: CREB3L1 Antibody (C-term) staining of Mouse stomach tissue lysates (35 ug/lane). CREB3L1 (arrow) was detected using the purified Pab.



CREB3L1 Antibody (C-term) staining of Formalin-Fixed, Paraffin-Embedded Human prostate carcinoma. This antibody was peroxidase-conjugated to the secondary antibody, followed by DAB staining. This data demonstrates the use of this antibody for immunohistochemistry. Clinical relevance has not been evaluated.



Flow cytometric analysis of heLa cells using CREB3L1 Antibody (C-term) (bottom histogram) compared to a negative control cell (top histogram). FITC-conjugated Goat-anti-Rabbit secondary antibodies were used for the analysis.