

Product datasheet for **AP17242PU-N**

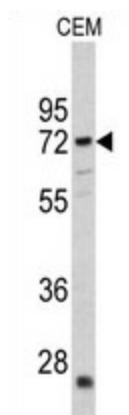
CRAT (N-term) Rabbit Polyclonal Antibody

Product data:

Product Type:	Primary Antibodies
Applications:	WB
Recommended Dilution:	Western blot: 1:50 - 1:100. ELISA: 1:1,000.
Reactivity:	Human
Host:	Rabbit
Clonality:	Polyclonal
Immunogen:	KLH conjugated synthetic peptide selected from the N-terminal region of human CRAT
Specificity:	This antibody detects CRAT at N-term.
Formulation:	PBS with 0.09% (W/V) sodium azide State: Liquid Ig fraction
Concentration:	lot specific
Purification:	Prepared by Saturated Ammonium Sulfate (SAS) precipitation followed by dialysis against PBS
Conjugation:	Unconjugated
Storage:	Store the antibody at 2 - 8 °C up to one month or (in aliquots) at -20 °C for longer. Avoid repeated freezing and thawing.
Stability:	Shelf life: one year from despatch.
Gene Name:	carnitine O-acetyltransferase
Database Link:	Entrez Gene 1384 Human P43155
Background:	CRAT is carnitine acetyltransferase (CRAT), which is a key enzyme in the metabolic pathway in mitochondria, peroxisomes and endoplasmic reticulum. CRAT catalyzes the reversible transfer of acyl groups from an acyl-CoA thioester to carnitine and regulates the ratio of acylCoA/CoA in the subcellular compartments.
Synonyms:	CAT1, Carnitine acetylase, Carnitine acetyltransferase
Note:	Molecular weight: 70858 Da
Protein Families:	Druggable Genome



[View online »](#)

Product images:

Western blot analysis of CRAT antibody (N-term) in CEM cell line lysates (35 ug/lane). CRAT (arrow) was detected using the purified Pab.