

Product datasheet for **AP17240PU-N**

CD21 (CR2) (C-term) Rabbit Polyclonal Antibody

Product data:

Product Type:	Primary Antibodies
Applications:	FC, IHC, WB
Recommended Dilution:	Peptide ELISA: 1/1,000. Western blot: 1/100-1/500. Immunohistochemistry on Paraffin Sections: 1/50-1/100. Flow Cytometry: 1/10-1/50.
Reactivity:	Human
Host:	Rabbit
Clonality:	Polyclonal
Immunogen:	KLH conjugated synthetic peptide between 986-1014 amino acids from the C-terminal region of Human CR2.
Specificity:	This antibody detects CD21 at C-term.
Formulation:	PBS State: Liquid purified Ig fraction Preservative: 0.09% (W/V) Sodium Azide
Concentration:	lot specific
Purification:	Purified through a protein A column, followed by peptide affinity purification
Conjugation:	Unconjugated
Storage:	Store undiluted at 2-8°C for one month or (in aliquots) at -20°C for longer. Avoid repeated freezing and thawing.
Stability:	Shelf life: one year from despatch.
Predicted Protein Size:	112916 Da
Gene Name:	complement component 3d receptor 2
Database Link:	Entrez Gene 1380 Human P20023



[View online »](#)

Background:

CR2 is a membrane protein, which functions as a receptor for Epstein-Barr virus (EBV) binding on B and T lymphocytes.

Receptor for complement C3Dd, for the Epstein-Barr virus on human B-cells and T-cells and for HNRPU. Participates in B lymphocytes activation.

Cellular Location: Membrane; Single-pass type I membrane protein.

Tissue Location: Mature B-lymphocytes, T-lymphocytes, pharyngeal epithelial cells, astrocytes and follicular dendritic cells of the spleen.

Synonyms:

Complement receptor type 2, CR2, C3DR, C3d receptor, EBV Receptor, Dendritic Cell Marker

Protein Families:

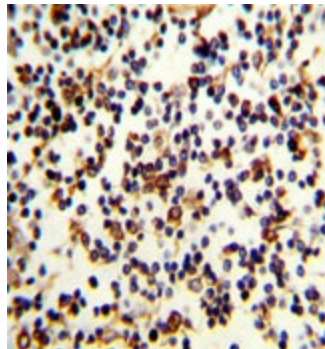
Druggable Genome, Transmembrane

Protein Pathways:

B cell receptor signaling pathway, Complement and coagulation cascades, Hematopoietic cell lineage

Product images:

Western blot analysis of CD21 antibody (C-term) in Ramos cell line lysates (35 ug/lane). CR2 (arrow) was detected using the purified Pab.



Formalin-fixed and paraffin-embedded human Lymph reacted with CD21 Antibody (C-term), which was peroxidase-conjugated to the secondary antibody, followed by DAB staining. This data demonstrates the use of this antibody for immunohistochemistry; clinical relevance has not been evaluated.