

## Product datasheet for **AP17239PU-N**

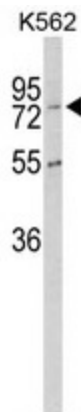
### Carboxypeptidase Z (CPZ) (N-term) Rabbit Polyclonal Antibody

#### Product data:

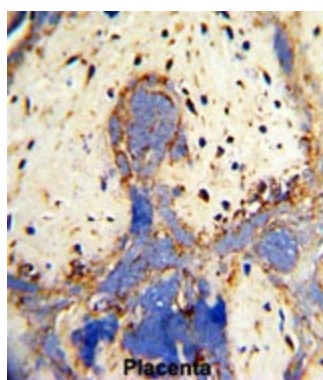
Product Type:	Primary Antibodies
Applications:	IHC, WB
Recommended Dilution:	Western blot: 1:50 - 1:100. ELISA: 1:1,000. Immunohistochemistry on paraffin sections: 1:50 - 1:100.
Reactivity:	Human
Host:	Rabbit
Clonality:	Polyclonal
Immunogen:	KLH conjugated synthetic peptide selected from the N-terminal region of human CPZ
Specificity:	This antibody detects CPZ at N-term.
Formulation:	PBS with 0.09% (W/V) sodium azide State: Liquid Ig fraction
Concentration:	lot specific
Purification:	Prepared by Saturated Ammonium Sulfate (SAS) precipitation followed by dialysis against PBS
Conjugation:	Unconjugated
Storage:	Store the antibody at 2 - 8 °C up to one month or (in aliquots) at -20 °C for longer. Avoid repeated freezing and thawing.
Stability:	Shelf life: one year from despatch.
Gene Name:	carboxypeptidase Z
Database Link:	<a href="#">Entrez Gene 8532 Human Q66K79</a>
Background:	CPZ is a member of the metallo-carboxypeptidase family. This enzyme displays carboxypeptidase activity towards substrates with basic C-terminal residues. It is most active at neutral pH and is inhibited by active site-directed inhibitors of metallo-carboxypeptidases.
Synonyms:	CPZ
Note:	Molecular weight: 73627 Da
Protein Families:	Druggable Genome, Protease, Secreted Protein



[View online »](#)

**Product images:**

Western blot analysis of CPZ Antibody (N-term) in K562 cell line lysates (35 ug/lane). CPZ (arrow) was detected using the purified Pab.



Formalin-fixed and paraffin-embedded human placenta with CPZ Antibody (N-term), which was peroxidase-conjugated to the secondary antibody, followed by DAB staining. This data demonstrates the use of this antibody for immunohistochemistry; clinical relevance has not been evaluated.