

## Product datasheet for **AP17236PU-N**

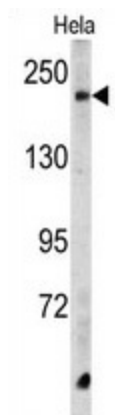
### Carboxypeptidase D (CPD) (C-term) Rabbit Polyclonal Antibody

#### Product data:

Product Type:	Primary Antibodies
Applications:	WB
Recommended Dilution:	Western blot: 1:50 - 1:100. ELISA: 1:1,000.
Reactivity:	Human
Host:	Rabbit
Clonality:	Polyclonal
Immunogen:	KLH conjugated synthetic peptide selected from the C-terminal region of human CPD
Specificity:	This antibody detects CPD at C-term.
Formulation:	PBS with 0.09% (W/V) sodium azide State: Liquid Ig fraction
Concentration:	lot specific
Purification:	Prepared by Saturated Ammonium Sulfate (SAS) precipitation followed by dialysis against PBS
Conjugation:	Unconjugated
Storage:	Store the antibody at 2 - 8 °C up to one month or (in aliquots) at -20 °C for longer. Avoid repeated freezing and thawing.
Stability:	Shelf life: one year from despatch.
Gene Name:	carboxypeptidase D
Database Link:	<a href="#">Entrez Gene 1362 Human O75976</a>
Background:	The metallo-carboxypeptidase family of enzymes is divided into 2 subfamilies based on sequence similarities. The pancreatic carboxypeptidase-like and the regulatory B-type carboxypeptidase subfamilies. Carboxypeptidase D has been identified as a regulatory B-type carboxypeptidase. CPD is a homolog of duck gp180, a hepatitis B virus-binding protein.
Synonyms:	Metallo-carboxypeptidase D, gp180, CPD
Note:	Molecular weight: 152931 Da
Protein Families:	Druggable Genome, Protease, Transmembrane



[View online »](#)

**Product images:**

Western blot analysis of CPD Antibody (C-term) in HeLa cell line lysates (35 ug/lane). CPD (arrow) was detected using the purified Pab.