

## Product datasheet for **AP17235PU-N**

### Carboxypeptidase B2 (CPB2) Rabbit Polyclonal Antibody

#### Product data:

Product Type:	Primary Antibodies
Applications:	WB
Recommended Dilution:	Western blot: 1/1000.
Reactivity:	Human
Host:	Rabbit
Clonality:	Polyclonal
Immunogen:	KLH conjugated synthetic peptide selected between 119~148 amino acids from the Center region of Human CPB2
Specificity:	This antibody detects CPB2 (aa 126~156).
Formulation:	PBS with 0.09% (W/V) Sodium Azide as preservative. State: Liquid purified Ig fraction.
Concentration:	lot specific
Purification:	Prepared by Saturated Ammonium Sulfate (SAS) precipitation followed by dialysis against PBS.
Conjugation:	Unconjugated
Storage:	Store the antibody undiluted at 2-8°C for one month or (in aliquots) at -20°C for longer. Avoid repeated freezing and thawing.
Stability:	Shelf life: one year from despatch.
Gene Name:	carboxypeptidase B2
Database Link:	<a href="#">Entrez Gene 1361 Human Q96IY4</a>
Background:	Carboxypeptidases are enzymes that hydrolyze C-terminal peptide bonds. The carboxypeptidase family includes metallo-, serine, and cysteine carboxypeptidases. According to their substrate specificity, these enzymes are referred to as carboxypeptidase A (cleaving aliphatic residues) or carboxypeptidase B (cleaving basic amino residues). CPB2 is activated by trypsin and acts on carboxypeptidase B substrates. After thrombin activation, the mature protein downregulates fibrinolysis. Polymorphisms have been described for its gene and its promoter region.



[View online »](#)

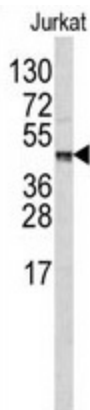
**Synonyms:** CPB2, Carboxypeptidase U, TAFI, CPU, pCPB

**Note:** **Calculated Molecular Weight:** 48412 Da

**Protein Families:** Druggable Genome, Protease, Secreted Protein

**Protein Pathways:** Complement and coagulation cascades

**Product images:**



Western blot analysis of CPB2 antibody (Center E134) in Jurkat cell line lysates (35 ug/lane). CPB2 (arrow) was detected using the purified Pab.