

## Product datasheet for **AP17231PU-N**

### CORIN Rabbit Polyclonal Antibody

#### Product data:

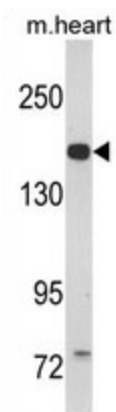
Product Type:	Primary Antibodies
Applications:	WB
Recommended Dilution:	<b>Peptide ELISA:</b> 1/1000. <b>Western blot:</b> 1/1000.
Reactivity:	Human, Mouse
Host:	Rabbit
Clonality:	Polyclonal
Immunogen:	KLH conjugated synthetic peptide between 459-490 amino acids from the Central region of human CORIN.
Specificity:	This antibody detects CORIN at Center.
Formulation:	PBS with 0.09% (W/V) sodium azide State: Liquid Ig fraction
Concentration:	lot specific
Purification:	Purified through a protein A column, followed by peptide affinity purification
Conjugation:	Unconjugated
Storage:	Store undiluted at 2-8°C for one month or (in aliquots) at -20°C for longer. Avoid repeated freezing and thawing.
Stability:	Shelf life: one year from despatch.
Gene Name:	corin, serine peptidase
Database Link:	<a href="#">Entrez Gene 53419 Mouse</a> <a href="#">Entrez Gene 10699 Human</a> <a href="#">Q9Y5Q5</a>
Background:	CORIN is a member of the type II transmembrane serine protease class of the trypsin superfamily. Members of this family are composed of multiple structurally distinct domains. This protein converts pro-atrial natriuretic peptide to biologically active atrial natriuretic peptide, a cardiac hormone that regulates blood volume and pressure. This protein may also function as a pro-brain-type natriuretic peptide convertase.
Synonyms:	CRN, Tmprss10, Pro-ANP-converting enzyme, ATC2
Note:	Molecular weight: 116565 Da



[View online »](#)

Protein Families: Druggable Genome, Protease, Transmembrane

### Product images:



Western blot analysis of CORIN Antibody (Center) in mouse heart tissue lysates (35 ug/lane). CORIN (arrow) was detected using the purified Pab.