

Product datasheet for **AP17229PU-N**

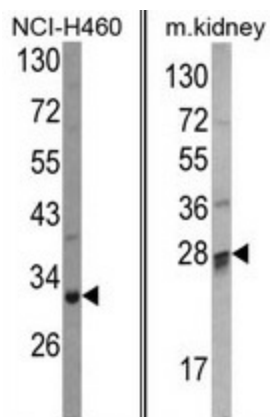
COMTD1 (C-term) Rabbit Polyclonal Antibody

Product data:

Product Type:	Primary Antibodies
Applications:	WB
Recommended Dilution:	Western blot: 1:50 - 1:100. ELISA: 1:1,000.
Reactivity:	Human, Mouse
Host:	Rabbit
Clonality:	Polyclonal
Immunogen:	KLH conjugated synthetic peptide selected from the C-terminal region of human COMTD1
Specificity:	This antibody detects COMTD1 at C-term.
Formulation:	PBS with 0.09% (W/V) sodium azide State: Liquid Ig fraction
Concentration:	lot specific
Purification:	Prepared by Saturated Ammonium Sulfate (SAS) precipitation followed by dialysis against PBS
Conjugation:	Unconjugated
Storage:	Store the antibody at 2 - 8 °C up to one month or (in aliquots) at -20 °C for longer. Avoid repeated freezing and thawing.
Stability:	Shelf life: one year from despatch.
Gene Name:	catechol-O-methyltransferase domain containing 1
Database Link:	Entrez Gene 118881 Human Q86VU5
Background:	COMTD1 is a putative O-methyltransferase.
Synonyms:	FLJ23841
Note:	Molecular weight: 28809 Da
Protein Families:	Druggable Genome, Transmembrane



[View online »](#)

Product images:

(LEFT) Western blot analysis of COMTD1 Antibody (C-term) in NCI-H460 cell line lysates (35 ug/lane). COMTD1 (arrow) was detected using the purified Pab. (RIGHT) Western blot analysis of COMTD1 Antibody (C-term) in mouse kidney tissue lysates (35 ug/lane). COMTD1 (arrow) was detected using the purified Pab.