

## Product datasheet for **AP17228PU-N**

### COMP (Center) Rabbit Polyclonal Antibody

#### Product data:

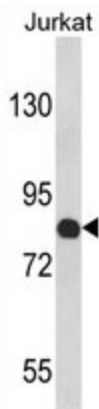
Product Type:	Primary Antibodies
Applications:	WB
Recommended Dilution:	Western blot: 1:100 - 1:500. ELISA: 1:1,000.
Reactivity:	Human
Host:	Rabbit
Clonality:	Polyclonal
Immunogen:	KLH conjugated synthetic peptide selected from the Center region of human COMP
Specificity:	This antibody detects COMP at Center.
Formulation:	PBS with 0.09% (W/V) sodium azide State: Liquid Ig fraction
Concentration:	lot specific
Purification:	Purified through a protein A column, followed by peptide affinity purification
Conjugation:	Unconjugated
Storage:	Store the antibody at 2 - 8 °C up to one month or (in aliquots) at -20 °C for longer. Avoid repeated freezing and thawing.
Stability:	Shelf life: one year from despatch.
Gene Name:	cartilage oligomeric matrix protein
Database Link:	<a href="#">Entrez Gene 1311 Human P49747</a>
Background:	COMP is a noncollagenous extracellular matrix (ECM) protein. It consists of five identical glycoprotein subunits, each with EGF-like and calcium-binding (thrombospondin-like) domains. Oligomerization results from formation of a five-stranded coiled coil and disulfides. Binding to other ECM proteins such as collagen appears to depend on divalent cations.
Synonyms:	Cartilage oligomeric matrix protein
Note:	Molecular weight: 82860 Da
Protein Families:	Druggable Genome, Secreted Protein



[View online »](#)

Protein Pathways: ECM-receptor interaction, Focal adhesion, TGF-beta signaling pathway

**Product images:**



Western blot analysis of COMP Antibody (Center) in Jurkat cell line lysates (35 ug/lane). COMP (arrow) was detected using the purified Pab.