

Product datasheet for **AP17227PU-N**

COLEC11 (N-term) Rabbit Polyclonal Antibody

Product data:

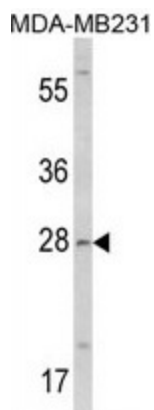
Product Type:	Primary Antibodies
Applications:	FC, IHC, WB
Recommended Dilution:	Western blot: 1/1,000. Peptide ELISA: 1/1,000. Flow cytometry: 1/10-1/50. Immunohistochemistry on Paraffin Sections: 1/50-1/100.
Reactivity:	Human
Host:	Rabbit
Isotype:	Ig
Clonality:	Polyclonal
Immunogen:	KLH conjugated synthetic peptide between 50-78 amino acids from the N-terminal region of human COLEC11.
Specificity:	This antibody detects COLEC11 at N-term.
Formulation:	PBS with 0.09% (W/V) sodium azide State: Purified State: Liquid Ig fraction
Concentration:	lot specific
Purification:	Prepared by Saturated Ammonium Sulfate (SAS) precipitation followed by dialysis against PBS
Conjugation:	Unconjugated
Storage:	Store the antibody at 2 - 8 °C up to one month or (in aliquots) at -20 °C for longer. Avoid repeated freezing and thawing.
Stability:	Shelf life: one year from despatch.
Gene Name:	collectin subfamily member 11
Database Link:	Entrez Gene 78989 Human Q9BWP8
Background:	COLEC11 is a member of the collectin family of C-type lectins, which contain a collagen-like domain and a carbohydrate recognition domain, and play a role in host-defense.
Synonyms:	COLEC11, Collectin kidney protein 1, CL-K1



[View online »](#)

Note: Molecular weight: 28665 Da

Product images:



Western blot analysis of COLEC11 Antibody (N-term) in MDA-MB231 cell line lysates (35 ug/lane). COLEC11 (arrow) was detected using the purified Pab.