

Product datasheet for **AP17220PU-N**

CLUAP1 (C-term) Rabbit Polyclonal Antibody

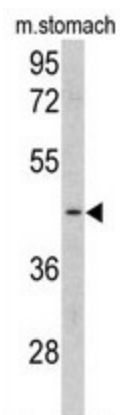
Product data:

Product Type:	Primary Antibodies
Applications:	WB
Recommended Dilution:	Western blot: 1:50 - 1:100. ELISA: 1:1,000.
Reactivity:	Human, Mouse
Host:	Rabbit
Clonality:	Polyclonal
Immunogen:	KLH conjugated synthetic peptide selected from the C-terminal region of human CLUAP1
Specificity:	This antibody detects CLUAP1 at C-term.
Formulation:	PBS with 0.09% (W/V) sodium azide State: Liquid Ig fraction
Concentration:	lot specific
Purification:	Prepared by Saturated Ammonium Sulfate (SAS) precipitation followed by dialysis against PBS
Conjugation:	Unconjugated
Storage:	Store the antibody at 2 - 8 °C up to one month or (in aliquots) at -20 °C for longer. Avoid repeated freezing and thawing.
Stability:	Shelf life: one year from despatch.
Gene Name:	clusterin associated protein 1
Database Link:	Entrez Gene 76779 Mouse Entrez Gene 23059 Human Q96AJ1
Background:	CLUAP1 may play a role in cell proliferation or apoptosis
Synonyms:	Clusterin-associated protein 1, KIAA0643
Note:	Molecular weight: 48125 Da



[View online »](#)

Product images:



Western blot analysis of CLUrfified Pab.