

Product datasheet for **AP17218PU-N**

CLNS1A (C-term) Rabbit Polyclonal Antibody

Product data:

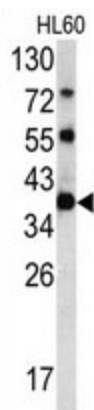
Product Type:	Primary Antibodies
Applications:	WB
Recommended Dilution:	Western blot: 1:50 - 1:100. ELISA: 1:1,000.
Reactivity:	Human
Host:	Rabbit
Clonality:	Polyclonal
Immunogen:	KLH conjugated synthetic peptide selected from the C-terminal region of human CLNS1A
Specificity:	This antibody detects CLNS1A at C-term.
Formulation:	PBS with 0.09% (W/V) sodium azide State: Liquid Ig fraction
Concentration:	lot specific
Purification:	Prepared by Saturated Ammonium Sulfate (SAS) precipitation followed by dialysis against PBS
Conjugation:	Unconjugated
Storage:	Store the antibody at 2 - 8 °C up to one month or (in aliquots) at -20 °C for longer. Avoid repeated freezing and thawing.
Stability:	Shelf life: one year from despatch.
Gene Name:	chloride nucleotide-sensitive channel 1A
Database Link:	Entrez Gene 1207 Human P54105
Background:	CLNS1A is a protein that functions in multiple regulatory pathways. The protein complexes with numerous cytosolic proteins and performs diverse functions including regulation of small nuclear ribonucleoprotein biosynthesis, platelet activation and cytoskeletal organization. The protein is also found associated with the plasma membrane where it functions as a chloride current regulator.
Synonyms:	Methylosome subunit pICln, Reticulocyte pICln, CLCI, ICLN
Note:	Molecular weight: 41569 Da (Component of the methylosome, a 20S complex containing SKB1)



[View online »](#)

Protein Families: Ion Channels: Other

Product images:



Western blot analysis of CLNS1A antibody (C-term) in HL60 cell line lysates (35 ug/lane). CLNS1A (arrow) was detected using the purified Pab.