

## Product datasheet for **AP17215PU-N**

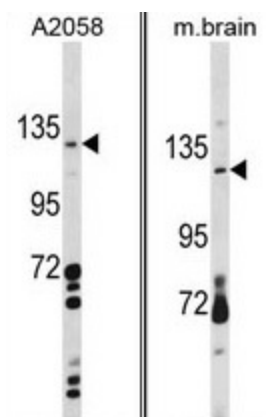
### CLEC16A Rabbit Polyclonal Antibody

#### Product data:

Product Type:	Primary Antibodies
Applications:	WB
Recommended Dilution:	Western blot: 1:100 - 1:500. ELISA: 1:1,000.
Reactivity:	Human
Host:	Rabbit
Clonality:	Polyclonal
Immunogen:	KLH conjugated synthetic peptide selected from the C-terminal region of human CLEC16A
Specificity:	This antibody detects CLEC16A at Center.
Formulation:	PBS with 0.09% (W/V) sodium azide State: Liquid Ig fraction
Concentration:	lot specific
Purification:	Purified through a protein A column, followed by peptide affinity purification
Conjugation:	Unconjugated
Storage:	Store the antibody at 2 - 8 °C up to one month or (in aliquots) at -20 °C for longer. Avoid repeated freezing and thawing.
Stability:	Shelf life: one year from despatch.
Gene Name:	C-type lectin domain family 16 member A
Database Link:	<a href="#">Entrez Gene 23274 Human Q2KHT3</a>
Background:	CLEC16A is almost exclusively expressed in immune cells, including dendritic cells, B lymphocytes and natural killer cells. There are three isoforms.
Synonyms:	CLEC16A, KIAA0350
Note:	Molecular weight: 117715 Da



[View online »](#)

**Product images:**

(LEFT) Western blot analysis of CLEC16A Antibody (Center) in A2058 cell line lysates (35 ug/lane). CLEC16A (arrow) was detected using the purified Pab. (RIGHT) Western blot analysis of CLEC16A Antibody (Center) in mouse brain tissue lysates (35 ug/lane). CLEC16A (arrow) was detected using the purified Pab.